

UNDERCURRENTS

THE JUNIOR LEAGUE OF THE PALM BEACHES | FALL 2016



— COMMITTED —
TO COMMUNITY

DECK THE PALMS
HOLIDAY MARKETPLACE



NOVEMBER 19, 2016
PALM BEACH COUNTY CONVENTION CENTER

COMPLETE ALL OF YOUR
Holiday Shopping

WITH THE JUNIOR LEAGUE OF THE PALM BEACHES

FEATURING

FREE GENERAL ADMISSION

FREE KID'S "ZOOTOPIA" CREATIVE AREA

FREE PHOTOS AND VISITS WITH SANTA FROM 10:30 A.M. - 1:30 P.M.

ALL DAY SILENT AUCTION TO BENEFIT THE JUNIOR LEAGUE

WANT THE VIP EXPERIENCE?

VIP TICKETS | \$40 EACH

WWW.JLPB.ORG/DECK-THE-PALMS-V-I-P-TICKETS/



LESSER LESSER
LANDY & SMITH^{PLLC}
ATTORNEYS AT LAW
-Personal Injury Law Since 1927-

LIKE US ON FACEBOOK: WWW.FACEBOOK.COM/JLPBDECKTHEPALMS

contents



8	An Empowering GEMS Mural
8	A Nelle Smith “Girls Night In”
9	Finishing Touches for Vita Nova
10	Done in a Day
11	Quantum House Turns 15!
12	Pink Palm Baskets of Hope
13	Junior Mints: A Lifetime of Friendship
14	Garden Treasure, Unearthed
16	More Than 60 Years of Eye and Ear
19	Making an Impact
20	WHY We Volunteer
21	Deck the Palms
22	Lady in Red Kickoff Event
23	General Membership Meeting
24	New Member Bus Tour
28	Sustainer News

CREDITS:

Editor: Ashley Scharber

Contributors: Whitney Burbank, Joan Jones, Alison Percy, Elizabeth Sanford, Taylor St. Clair, Sophia Stone, Betsy Vaughan

UNDERCURRENTS

THE JUNIOR LEAGUE OF THE PALM BEACHES

Issue 2, Vol.57



BOARD OF DIRECTORS

PRESIDENT Beth Stevens
PRESIDENT ELECT Noemi Coltea
EXECUTIVE VP Ilene Passler
NOMINATING Christine Jerabek
SECRETARY Andrea Robinson
TREASURER Ashley Cejka
BOARD MEMBERS
Caitlin Campbell
Meaghan Flenner
Jessica Pinsky
Sophia Stone
Melodie van der Baan

EXECUTIVE COMMITTEE

EXECUTIVE VP Ilene Passler
EXECUTIVE VP - ELECT Elena Peroulakis
COMMUNICATIONS VP Megan Blomqvist
COMMUNITY VP Melissa Perry
FUNDRAISING VP Angela Sarlo
FUNDRAISING VP-ELECT Kristen Laraia
MEMBERSHIP VP Jean Thompson
TREASURER ELECT Erin Earl

SUSTAINER BOARD

CO-CHAIRS Joan Jones, Betsy Vaughan

COMMUNICATIONS COUNCIL

COMMUNITY IMPACT Stacy Cirrito, Leah Simon
DIGITAL MEDIA Kristi Mangan
EBLASTS Elizabeth Portmess
E-LEAGUE Jessica McBath, Christine Walter
HISTORIANS Elizabeth Palace, Kristen Aiello
PHOTOGRAPHERS Ashley Dias, Kristie Wells
PUBLIC RELATIONS Jamie Bitzer, Dana Hagan
PUBLISHING Nicole Ehrlich
UNDERCURRENTS Ashley Scharber
VIDEOGRAPHER Kim Phan

COMMUNITY COUNCIL

ADVOCACY Crystal Carswell, Melissa Norman
EXTREME MAKEOVER Natasha Rawding
COTILLION Kim Donaldson, Kelly Spencer
DONE IN A DAY Brittany Gutin, Felice Shearer
EYE AND EAR ALERT Kristin Singh, Heidi Skov
EYE AND EAR ALERT AD HOC Amanda Delucia, Laura Russell
GEMS Catherine Anido, Kayleigh Carrington
GRANT WRITING Megan Rogers
JUNIOR MINTS Marcelle Burke
NELLE SMITH Alex Chase, Nina Malagic
PINK PALM BRIGADE Sarah Cohen, Nicole Lucas

MEMBERSHIP COUNCIL

ARRANGEMENTS Jen Brown, Colleen Nalven
EDUCATION AND TRAINING Martha Collier
HEART OF THE LEAGUE Allison Fogg, Lauren King
MEMBER DEVELOPMENT Annaleah Morrow
MEMBERSHIP Meghan Quinn
NEW MEMBERS Kristin Kellogg, Xiomí Murray
NEW MEMBER KIDS IN THE KITCHEN Kelly Doyle
PLACEMENT Jessica Brees, Clare Gerard
POINTS TRACKERS Melissa Smiles, Jeana White
SPECIAL EVENTS Megan Baker, Melissa Kellner
SUSTAINER LIAISONS Lisa Bagocius, Heather Sherrod
TRANSFERS Fran Etienne, Stephanie Pittington

FUNDRAISING COUNCIL

CHARITABLE GIVING Shani Core, Tricia Taeger
COOKBOOK Carley Bockmeyer
DECK THE PALMS Courtney Stafford Hickey, Kim Loux
DECK THE PALMS EVENT DAY Chelsea Wolkoff
DECK THE PALMS SPONSORS Emily Schachtel
DECK THE PALMS VENDORS Nadia Spivak
DONOR RELATIONS Ann Breeden, Kathryn Sexton
SMALL FUNDRAISERS Jo Perez Dubois, Dana Ross

HEADQUARTERS

OFFICE MANAGER Laura Burke
470 Columbia Drive, Building F
West Palm Beach, Florida 33409
Phone: 561.689.7590

hq@jlpb.org | www.jlpb.org

OFFICE HOURS: Tuesday, Wednesday, Thursday 9:30 a.m. to 1:30 p.m.
September through May

Junior League of the Palm Beaches, Inc. Women building better communities.*

UNDERCURRENTS is the magazine of the Junior League of the Palm Beaches, Inc. UNDERCURRENTS is published quarterly. UNDERCURRENTS is distributed to Junior League Active, Sustaining, and Provisional Members as well as community supporters. Circulation is 800+ with an estimated readership of 2,000-2,400. THE JUNIOR LEAGUE OF THE PALM BEACHES is a nonprofit 501(c)(3) organization of trained women volunteers. THE JUNIOR LEAGUE OF THE PALM BEACHES positively impacts children and young adults in the foster care system. THE JUNIOR LEAGUE OF THE PALM BEACHES specializes in community partnerships. This publication contains paid advertising and such advertisements do not necessarily reflect the endorsement of the products or services by THE JUNIOR LEAGUE OF THE PALM BEACHES.

Letter From the President

November is here. It is time to look inward and outward as we approach the season of thanks, giving, and the spirit of (wo)mankind. The warm scents of spices and memories draw us together into the kitchen and around the table. As the crisp autumn air and cooler temperatures bring us outdoors to enjoy a youthful game of catch or tag, an early morning walk or after dinner stroll, we are invigorated and energized as the season begins.

During this time of the year, we reflect back to our New Year's resolutions (and, yes, mine are on Facebook thanks to JLPB's Heart of the League committee). Did we do what we set out to do this year? Is there still time? Are we making the most of what is important to us? Are we fulfilling the promises made to ourselves and our community?

The answer is yes! We should all be proud of our league, our members and our community. The Junior League of the Palm Beaches' commitment to community is woven throughout this issue of Undercurrents. From Nelle Smith and Junior MINTS to Pink Palm and Done in A Day, our community projects and partners are highlighted and provide vivid examples of the impact JLPB is making everyday.

One example is the mural painted by the GEMS committee with the young women at the DJJ. Featured on page eight, it is a visual and artistic example that we all have similar needs – love, hope, peace – and, of course, all enjoy dreams, fun and laughter too. The good times, fulfillment and inspiring moments, experienced as a member of the Junior League of the Palm Beaches, ignite our passion and fuel our fire as volunteers. It is our volunteers, our members and all we are accomplishing together that inspires me and fills my heart with gratitude.

To each and every member and supporter of the Junior League of the Palm Beaches,

Thank You!

You make my and our world a better place.

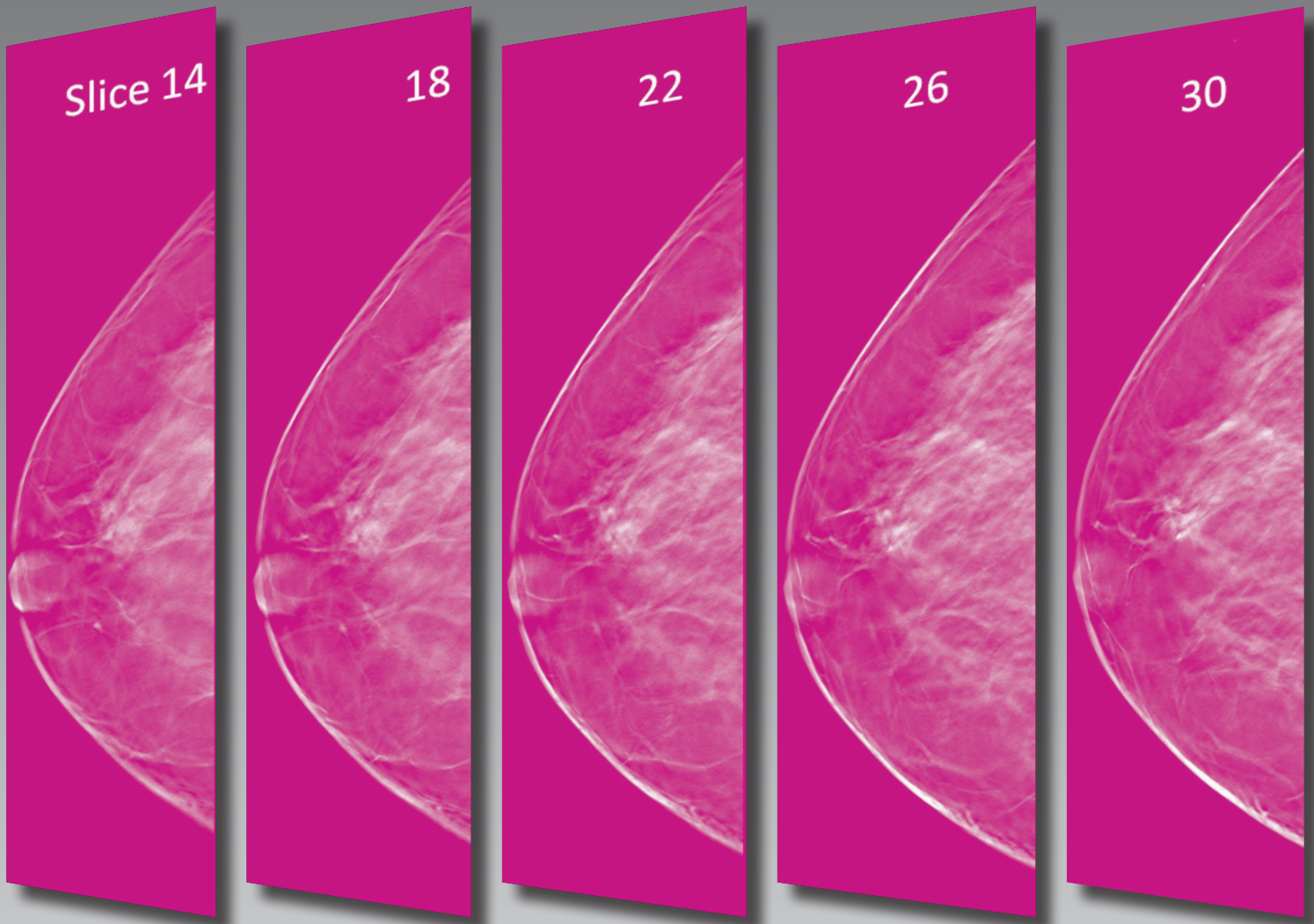
Enjoy the season,

Beth Stevens

President
2016-2017



3D MAMMOGRAPHY



↑ Increase in detection. ↓ Decrease in callbacks.

 Independent
imaging

phone 561-795-5558

fax 561-792-7300

www.independentimaging.com

- Same Day Appointments
- Board Certified Radiologists
- ACR Certified Facilities
- Evening and Weekend Hours
- Complimentary transportation
- Accepts All Insurance



Wellington • Belle Glade • Lake Worth • Palm Beach Gardens

Letter From the Editor

As we come into the holiday season, we take time to recognize all that we have to be thankful for, including our friends and family, the opportunities we have been given, and much more. It is also during this time that we share those gifts with those who are not as fortunate.

The principle of giving back and helping those who are less fortunate is a vital part of the mission of the Junior League of the Palm Beaches. This is something we do not only during the holidays, but also throughout the entire year. Volunteer shifts are regularly filled to capacity as we eagerly throw on our pink JLPB volunteer shirts and set out to make an impact.

This issue of Undercurrents showcases our community involvement and highlights many of the partners we dedicate our time to. As you flip through the pages of this issue, you will see that our community impact is far-reaching and full of history.

We explore the more than 60-year history of JLPB legacy project Eye and Ear Alert and take a step back into childhood with the revitalization of a treasure trek map created 17 years ago for Mounts Botanical Garden. This year also marked the 15th anniversary of Quantum House, which originally started as a JLPB project.

Whether we are leading by example for girls in the Department of Juvenile Justice or getting our hands dirty for a renovation of Vita Nova, our members can regularly be seen making a difference throughout the community.

I was truly inspired by the story on page 13 in which a League member shares her story of becoming life-long friends with her mentee from the Junior Mints program. Although we often measure our success by the number of people we are able to serve, it is important that we not forget the individual lives that are changed because of our work.

This story, and all of the others featured in this issue, are examples of only some of the many ways JLPB and its members work to bring real change to our Palm Beach County Community.

From our hearts to yours, we thank our members and community partners for your outstanding service and we wish you a happy holiday!

Ashley Scharber

Undercurrents Editor
2016-2017





Improving Communities



By Taylor St. Clair

The Girls Empowerment Mentoring Sessions (GEMS) continue to inspire, teach, empower and instill hope in the girls in the Palm Beach Juvenile Detention Center. During the first two sessions of GEMS this year, the girls painted a mural on the wall of the center with the members of the Junior League. The mural gave the girls a creative voice and the opportunity to work together to create a jungle themed piece that included inspirational words. The girls now have a beautiful piece of inspirational artwork as a reminder of their goals each time they pass by. The Junior League of the Palm Beaches visits the DJJ twice a month.



By Alison Percy

Nelle Smith Residence for Girls is a group home for young women ages 12 to 18 who have suffered physical abuse, sexual abuse and/or abandonment. The Nelle Smith residence was established in 1970 and can host twelve girls at any given time. The primary goal of Nelle Smith is to prepare the girls to transition from group living to reunification with their family. When reunification is not possible, the focus shifts to preparation for independent living.

Each month, the Junior League of the Palm Beaches hosts multiple events for the Nelle Smith girls, including cooking nights that teach the girls how to prepare affordable, healthy and easy meals and “Girls Nights In” that offer educational and inspirational speakers or can simply be a night of fun. The women of JLPB serve as role models to the girls, helping them develop healthy relationships with authority, peers, and eventually their family and community.





FINISHING TOUCHES FOR **VITA NOVA**

By Taylor St. Clair

Room by room, the Junior League of the Palm Beaches has transformed Vita Nova Village. Chosen as the 75th anniversary project for the 2015-2016 league year, JLPB has worked to update the dormitory style living facility for boys and girls ages 18-25 who have aged out of the foster care system and would be homeless without the resources provided by Vita Nova.

Throughout the years, the facility has seen a lot of wear and tear, and JLPB has worked to help create a living space these young adults can be proud of.

Last year, JLPB painted, cleaned and fully furnished a total of 14 units within the village. Even throughout the summer, between vacations, kids being out of school and the oppressive heat, JLPB worked hard to complete two units. The final two units were slotted to be completed in October.

After completing a boys unit at the end of September, committee chair Natasha Rawding stated, "I personally have had a great time choosing the furnishings, which I try to make different for every apartment, so each one is as unique and special as the residents who live there."

This year, the renovation continues into the common area space, which includes offices and living and dining areas. These areas are open to the residents as a place to gather, work on the computers or catch a movie with friends.

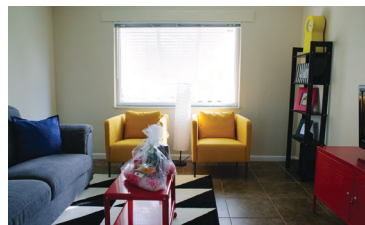
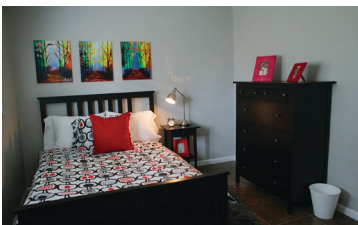
The renovation plan is to liven up the office area with new furniture and bright rugs, to turn one area into a comfortable living room with big couches and a library, and to make the other into a dining room with a table large enough to accommodate all of the residents.

Rawding commented on the changes saying, "It's really important to us to create a place where the kids can break bread together at mealtimes, and the changes we've proposed to the spaces will finally make that possible."

JLPB has stepped up throughout this project and made a difference at Vita Nova Village, whether it was through donating much-needed items such as first aid kits, flat screen televisions and BBQ grills or getting down and dirty during cleaning days. The JLPB women have left no need unfulfilled in making this village a safe and warm home for its residents.

Furthermore, the project would not have been possible without the sponsorships and donations of community members and businesses.

Rawding concluded saying, "It's not every day that you can see such a tangible improvement to not only the community, but to the lives of young people who deserve it so very much."





DONE IN A DAY



By Taylor St. Clair

Done in a Day (DIAD) activities provide the Junior League of the Palm Beaches with the opportunity to help multiple organizations throughout the year. Volunteers participate in single-day events with a local nonprofit organization or community event. Already this year, DIAD has offered volunteer opportunities with Red Apple Supply Closet, Quantum House, Palm Beach County Food Bank, the Fall Festival at Mounts Botanical Garden, Loggerhead Marinelife Center beach cleanups and a Palm Beach Children's Hospital Halloween Party.



Pictured here, volunteers created arts and crafts with children of Lord's Place. Other community partners include Friends of Foster Children, United Way, Feeding South Florida, St. Mary's Children's Hospital and Hanna's Home.

Upcoming DIAD Activities:

December 2016

- 11 Pink Palm Basket Build
- 17 Quantum House Arts & Crafts

January 2017

- 14 Quantum House
- 19 Palm Beach Food Bank

February 2017

- 4 Pink Palm Basket Build
- 11 Quantum House Arts & Crafts
- 16 Palm Beach Food Bank
- 18 PBA Symphony

March 2017

- 11 Quantum House Arts & Crafts
- 16 Palm Beach Food Bank
- 18 Loggerhead Marinelife Center Beach Cleanup

April 18, 2017

- 8 Quantum House
- 20 Palm Beach Food Bank
- 29 Pink Palm Basket Build





QUANTUM HOUSE TURNS 15!

By Alison Percy

The year 2016 marks the 15th Anniversary of Quantum House, a home away from home for families whose children are receiving medical treatment in Palm Beach County.

Originally a project of the Junior League of the Palm Beaches, the house opened its doors in 2001 on the campus of St. Mary's Medical Center in West Palm Beach. The League helped bring the vision of Quantum House to life with 10 bedrooms and 10,000 square feet solely dedicated to caring for families with critically ill children.

During its 15 years of existence, Quantum House has helped families from every state and more than two dozen countries around the world. Each year, more than 500 families are housed there.

In addition to providing a warm and welcoming place for families, Quantum House aims to enrich the lives of families staying there through daily activities and nightly meals prepared by volunteer "Chefs for a Day."

In 2015, the house broke ground on a \$5 million addition to add an extra 20,000 square feet, which includes 20 bedrooms, expanded common areas, a fitness center and a learning lounge.

In August 2016, the JLPB granted Quantum House \$15,000 in celebration of its 15th Anniversary. The new kitchen galley will be named for the Junior League of the Palm Beaches. The expansion was completed in 2016, just in time to celebrate the house's 15th year!

On Oct. 22, 2016, JLPB's Done in a Day committee helped Quantum House celebrate this important milestone by volunteering at a barbeque luncheon. There were an estimated 150 attendees at the event that featured a delicious lunch, fun games, a time capsule and a collection of 15 cakes representing each year the house has served this community. Twenty League members acted as greeters, served the cakes, and led arts and crafts activities for the children staying in the house.



PINK PALM

Baskets of Hope



By Alison Percy

Pink Palm serves as the liaison between the Junior League of Palm Beaches and six local nonprofit organizations, providing care packages filled with life necessities for those in need. Each year, JLPB volunteers create dozens of care packages for Friends of Foster Children, the McKinney Vento Program, Hannah's Home, Vita Nova and Nelle Smith Residence for Girls.

These organizations provide life-saving resources for families and children in need in our community, and JLPB is honored to have the opportunity to help support their missions with our care packages.

Friends of Foster Children steps in when children have been removed from their homes due to abuse and neglect. Sometimes children are taken from their homes with only the clothes on their backs and are in immediate need of necessities like clothes, shoes, underwear and hygiene items. Through the donation of these items and more, Pink Palm helps FFC maintain a children's closet with gently used second-hand items.

The McKinney Vento Program, previously known as the Homeless Emergency Assistance Response Team (H.E.A.R.T.), is a group of case managers and foster care liaisons within the public school system that provides a relief spot for school-aged children who may not have a regular place to call home or who simply are not receiving the resources they need at home. It provides these students with support services and items they need to be successful. When

the program is in need of help on a special project or in fulfilling a need for a student, they call Pink Palm, whom they know can rally JLPB members to come through in helping fill any need.

Hannah's Home, located in Tequesta, provides a loving and caring home for young pregnant single women who have nowhere else to go. The long-term maternity home provides women with the time and support they need to accomplish their goals. The home helps the young women learn how to be on their own and move forward without relying on the system. Pink Palm supplies these new mothers with important items they need to help take care of themselves and their children including, maternity, baby or teen clothing.

Nelle Smith Residence for Girls and Vita Nova Village both provide a stable, nurturing environment for their residents. Nelle Smith houses young women ages 12 – 18 and Vita Nova provides a safe home for young adults ages 18 – 25 who have aged out of the foster care system. Upon first arriving at each facility, Pink Palm provides each girl with a laundry basket filled with pillows, blankets, toiletries and other items they need for starting an independent life.

Each year, Pink Palm hosts several basket builds at JLPB headquarters where volunteers collect and assemble these baskets of hope. The next build will be held on Dec. 11, 2016 from 10 a.m. to 12 p.m. The committee also regularly collects items for baskets, such as soap, shampoo, lotion and even toiletries from hotels.

Junior MINTS

A LIFETIME OF FRIENDSHIP

By Taylor St. Clair

This year marks the second of a two-year trial of a new Junior League of the Palm Beaches' program called Junior MINTS, which is aimed at Mentoring, Inspiring, Nurturing, Teaching and Supporting the young women of Vita Nova.

Every two years, JLPB mentors are paired with mentees from Vita Nova. The pairings are created based on personality and are set up for success. To be a part of the program, JLPB mentors must go through an interview process and must demonstrate a commitment to working with their mentee for the two-year duration. Mentees must also pass certain qualifications.

In 2015, there were four mentor/mentee pairings, all of which have stayed in touch, even after one mentee moved away.

One of the dynamic pairings is Crissy and Marissa. They meet once a month and over the course of the last year, have developed a strong bond.

JLPB member Crissy has been with her mentee Marissa through a number of significant life events, including moving from Vita Nova, starting a new job and going to school.

The pairing started out with a phone call and a little texting before their first meeting, which was very conversational as the two got to know each other. They went out to dinner at Mellow Mushroom the first time they met and just recently celebrated their one-year anniversary.

Over the course of their friendship, the pair has gone to a carnival, ice-skating, roller blading and even to Rapids Water Park. Their friendship has developed into a close bond that allows them to talk about everything.

Even though Crissy is technically in the mentor roll, she says, "I feel like when I'm hanging out with her, she's genuinely my friend. It's not like a job or a commitment to me. That's just where our relationship is at this point."

And the feeling is mutual. Crissy relayed a conversation where Marissa said, "You know this isn't just a year or two commitment, you know you can never leave me." She also was not keen on Crissy ever getting another commitment.

Crissy and Marissa have created a lifelong friendship built on trust and encouragement through the Junior MINTS program. They demonstrate that in this program, the mentee is not the only one who benefits, as the mentor also gets to enjoy a new friendship and see a young lady blossom.

Crissy acknowledged that this is more than a full-time commitment and stated, "She (Marissa) will always be in my life."



Marissa and Crissy

Garden Treasure, Un

By Whitney Burbank



TREASURE TREK

In West Palm Beach, where the weather is hot, Mounts Botanical Garden is where X marks the spot.

The trek through the garden will bring you great pleasure, as you discover each unique garden treasure.

This map is a project of The Junior League of the Palm Beaches, Inc.



Illustration courtesy of Dean Young and Jeff Parker

Finished layout and design courtesy of Strategic Marketing, Inc.

© 1999. The Junior League of the Palm Beaches, Inc.

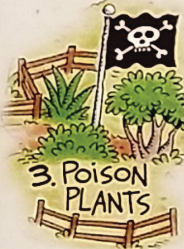
1. TROPICAL FRUIT



1. TROPICAL FRUIT
Have you ever seen the fruit of the tamarind or sapodilla at the grocery store? No? Think again! Chickpea, which comes from the sapodilla, is used to make chewing gum; and the fruit from tamarind trees are the main source of Worcestershire sauce and other spices. Tropical fruits are full of surprises! Take a look at the jaboticaba. Its fruit and flowers grow right on its trunk. The monstera is called the Swiss cheese plant: its fruit looks like an ear of corn, but tastes like a combination of strawberry, banana and pineapple.

2. CITRUS

When we think of citrus fruit, we often think of oranges, grapefruit, tangerines, lemons and limes, but there are others. The calamondin is unusual because we eat the peels and throw away the fruit on the inside! If you look up in the citrus trees, you can see the baited insect traps that help to monitor the number of fruit flies in the area.



3. POISON PLANTS

3. POISON PLANTS
Beware! A plant can be poisonous if you eat it or touch it. The oleander is pretty to look at but don't burn it: the smoke is deadly!

4. FLOWERING TREES

Many trees in this area have seed pods with wings. Their seeds are spread by the wind. The seed pods of the kapok are filled with fluffy cotton fiber used for stuffing. Did you know that kapok fiber has five times the buoyancy of cork? It is used in many everyday things, such as life jackets, sleeping bags and mattresses.



5. BUTTERFLY GARDEN

5. BUTTERFLY GARDEN
Watch a butterfly! Butterflies have a long tongue, three times the length of their bodies, making it easy for them to suck up water or flower nectar. In our garden look for butterfly larvae (caterpillars) and the plants they like to eat: milkweed, beans, passion flowers and wisteria.



6. TRIAL GARDEN/XERISCAPE COMPOST AREAS

Don't worry, the flowers in the trial garden won't go to jail! They are helping us learn about which plants will grow well in our South Florida climate. Do you have any of these plants in your yard?

Tired of watering plants? Try xeri-scape landscaping. All of the plants here need little water or attention, and most are native to Florida so they require fewer chemicals for survival. Don't throw all your garbage out! Some of it is good for the environment. Compost is rich soil made from decomposed yard and food waste, like vegetable scraps and eggshells.

7. VEGETABLE GARDEN

It looks like a potato and tastes like a potato, but it's really a cassava. Cassava is a starchy tropical vegetable that can grow year round, and it dates back to 2500 to 3000 BC. It is a major food source in tropical regions. Tapioca comes from the roots of the this plant. Yum-yum...tapioca pudding!



8. NATIVE PLANTS

Native plants are plants that are believed to have been growing in Florida before European settlers arrived. The bald cypress is a native wetland plant and is also a deciduous tree, which means it loses its needles in the winter and looks bald! Can you see the knees of the bald cypress that stick out above the ground from the roots of the tree?



Now look at the gumbo limbo, also known as the tourist tree. Its bark looks as though it is sunburned. You can make a live fence by planting the limbs from this tree.

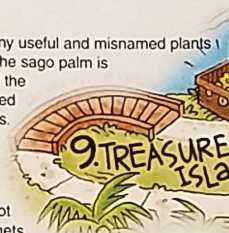
The slash pine is one of the most common native trees. Its seeds are important to wildlife, especially birds and squirrels. Can you guess what the soapberry plant would be used for?

9. THE ISLAND

Here on our island we find many useful and misnamed plants that are not what they seem. The sago palm is not really a palm: it is in one of the oldest known plant groups called cycads, also called living fossils. Cycads are so old that the dinosaurs used to eat them.

The screw pine is also called the "walking fence," but it is not even a relative of the pine. It gets its name from the leaves that grow in a spiral pattern around the trunk.

Check out the many bromeliads on the island. These plants can survive with little or no water. The leaves of the plant form a cup in the center of the plant to collect water and insects. The plant is nourished by what falls into the cup. (Bugs for lunch...yuck!) Some bromeliads, like the pineapple, grow on the ground, but most grow in trees.



unearthed

Nature tends to bring out the kid in all of us. No matter how long it has been since you have visited Mounts Botanical Garden of Palm Beach County, just stepping foot on the verdant 14-acre property in West Palm Beach can be reenergizing and invigorating.

That child-like wonder seems to have been encapsulated in the Mounts Botanical Garden Treasure Trek Map. The Junior League of the Palm Beaches was tasked with creating the map in 1999. The Mounts Committee members had a stroke of genius when they asked a Leaguer's father (who worked as an illustrator for the popular Blondie comic strip) to lend a hand in the design.

The award-winning site map was conceived and distributed to children for the 1999 Mounts Botanical Gardens Fall Festival. After 15 years, most copies had been tossed away or folded up and forgotten.

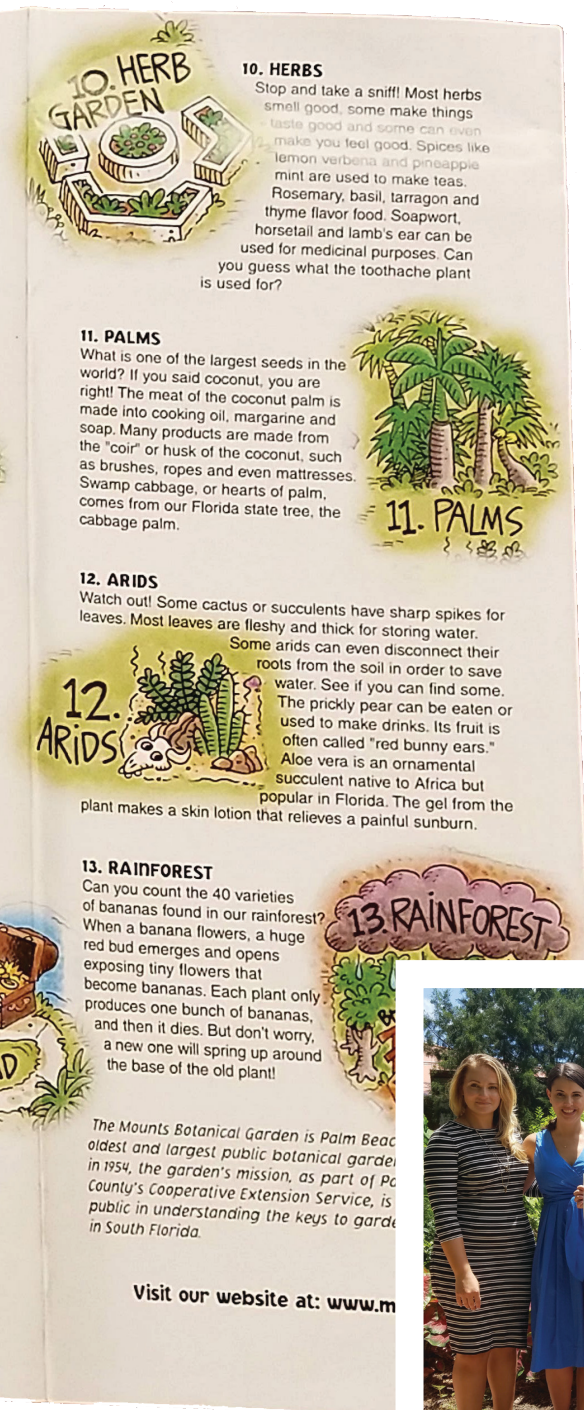
But recently, the hidden treasure was unearthed by chance.

Nearly two years ago, Rochelle Wolberg, Director of Programs at Mounts Botanical Garden, said she came across the original Treasure Trek map while cleaning out boxes at the Mounts offices. The bright greens and pinks outlined in whimsical pen strokes were still vibrant enough to catch her eye.

Wolberg said over the months of research that followed, by happenstance she came across the CD with the original file for the map. She went to the original graphic design team who said they remembered it as one of the most fun projects they worked on.

Wolberg and her team updated the map and printed 5,000 copies to be distributed to children as part of the youth education program of the Garden. Wolberg also presented one large Print to the League in July that is now framed and displayed at JLPB headquarters.

"It brought lots of smiles to the kids," recalled Beth Vandenberg who served as JLPB president in 1999. Vandenberg said she never forgot the beautiful drawing but admits, "Mounts is a treasure in itself, a little piece of paradise."



More Than 60 Years of Eye and Ear

By Liz Sanford

Since the 1950s, the Junior League of the Palm Beaches has provided free vision and hearing screenings to preschoolers in Palm Beach County through its legacy project Eye and Ear Alert. The program offers a vital service to families who may not have the resources to have their children tested for possible hearing or vision impairments.

Throughout the more than 60-year history of the program, the league has funded its efforts through membership dues, proceeds from the league's thrift store and other fundraising, and support from various organizations in the community.

The legacy this project has had on this community is one that is far-reaching. Over the years, trained League volunteers have provided thousands of children with hearing and vision checks they otherwise would not have had access to.

The program initially began as the Hearing Conservation Services in 1950 and was turned over to the county health department in 1960.

Several years later, after much research and study, a new preschool hearing and sight testing program and a preschool hearing class were created and called the Eye and Ear Alert Project. In its first year during the 1968-1969 league year, more than 500 children were tested. The project doubled its reach the following year, testing 1,000 children. That year, services were expanded to the Glades for the first time.

During the 1971-1972 league year, Eye and Ear Alert expanded its services and screened preschoolers four days a week. Two years later, the project was turned over to the Florida Society for the Prevention of Blindness.

Junior League of The Palm Beaches resumed administration and sponsorship of Eye and Ear Alert during the 1979-1980 league year and soon after purchased its own audiometer.

In the 1980-1981 league year, Eye and Ear Alert screened

1,930 children and received a grant the following year from the Kiwanis Club.

In its 15th and most successful year, 1982-1983, League members screened more than 3,000 students.

In 1985-1986 Eye and Ear Alert started a mobile unit for onsite screenings.

During its 20th year, Eye and Ear Alert continued to expand. In the 1987-1988 league year, the program screened 2,000 preschoolers for serious visual problems, hearing issues and for the first time, speech problems.

During the 25th year in 1993, 1,433 children from 37 preschools and day care centers were screened for possible sight and hearing problems. A 25th Anniversary celebration, which honored past chairmen, Junior League volunteers and the continued success of the project, was held at Memorial Presbyterian Church.

As the program continues to develop, several new changes are in the works. This year, Eye and Ear Alert moved the permanent housing of its equipment from Memorial Presbyterian to JLPB headquarters. Memorial Presbyterian played an important role in the growth and success of the Eye and Ear Alert program.

Under the leadership of committee chairs Heidi Skov and Kristin Singh, Eye and Ear Alert plans to screen more than 400 children at 10-12 different schools in the Palm Beach area for the 2016-2017 year. With this number of kids, they hope to bring awareness to families that may not have otherwise known that their child could be suffering from a hearing or vision impairment.

JLPB is proud of the strong history this project has within our community, and we continue to transform and develop its efforts year after year so that we can best fill this vital need.

Eye And Ear Alert: Pre-Schoolers

Half of all blindness is preventable . . . and proper medical attention in the first four years of a child's life may mean the difference between normal vision and partial blindness.

It is not usually neglect but widespread ignorance which leads parents to feel secure in postponing the first vision test until the child begins school. They must learn that the critical stage in developing acute vision is between the ages of one and seven — the human eye has become an "old dog", incapable of learning new tricks, by seven.

The Junior League of the Palm Beaches, co-sponsored by the Crippled Children's Clinic, has been working on "Eye and Ear Alert" for the past year and a half. This year they and local volunteers will screen four-year-old children in kindergartens and day care centers for sight and hearing defects which require medical attention. Teachers will be notified by mail of screening dates when children are to be brought to the clinic for testing.

Mrs. Kay Wooster of Tampa, a consultant from the Florida Society for the Prevention of Blindness, is training Junior League volunteers to administer visual acuity tests for amblyopia in particular: the Sneller E chart and the Hirschberg test.

The Hirschberg test requires the screener to point a flashlight at the child's forehead from a distance of 18-24 inches. If the light is reflected in the center of

both pupils, the child has passed the test. If the light is higher or lower in one eye than in the other, a report is sent to his parents requesting that they send him to the eye doctor of their choice. They are given 60 days to do so. The Junior League will make two attempts to contact them before the child's name is referred to the Public Health Department.

The Department sends a visiting nurse who determines the cause of the parents' failure to take the child to a doctor. If it's just carelessness the importance of the examination and treatment are made clear to them. If they can't afford treatment for the child, the Department provides it.

While instructing a class Mrs. Wooster commented, "You're going to have over- and under-referrals — you're only human. Some eye difficulties can be detected by the teacher, which is why we will ask the teacher to make out reports on different children. You will be with the children for a matter of five to seven minutes."

A new born child sees with only one eye at a time. At approximately six months his brain learns to overlap the two images and he sees more clearly. In about two years the technique is perfected.

If a child has amblyopia this process does not occur. The image from one eye is blurred by some disorder, perhaps farsightedness, astigmatism, or an eye muscle which is too long or too short. When the child tries to fuse the images from both eyes, he does not see well, and suppresses the blurry image of his weak eye. This prevents the eye from developing.

Time is a most important factor. The vision development ends by six or seven and the amblyopic eye can no longer learn. Since it may take a year or two to correct the weak eye, experts say the child with amblyopia should be found by the time he is three or four.

One of the great problems with the condition is that the outward appearance of the eye remains normal and outwardly healthy to an objective examination by a doctor. Special tests are required.

The pilot project sponsored by the Junior League is unique in its combination of visual and hearing screening.

Moritz Shultz, audiologist at the Crippled Children's Clinic, is training volunteers in the use of the VASC audiometer, a new device which makes the hearing test fun for children. A pre-taped voice indicates which of a selection of pictures the child should

point to. His passing or failing is determined by the number of pictures he properly identifies.

"There are two types of hearing loss", Mr. Shultz remarked, "caused by nerve damage or conductive difficulties. The latter can be corrected if caught in time. Ten per cent of pre-school children have hearing deficits and possibly half of those it caught in time can be corrected."

Conductive hearing loss can be caused by middle ear infection, inflamed adenoids or tonsils, the flu, or bad colds. "The issue is that we can't help them until we find them. Until now nothing was being done for pre-schoolers", Mr. Shultz remarked.

"One thing which we lack is a statewide hearing program which would aid indigent families whose children have hearing problems. The Junior League has been most helpful."

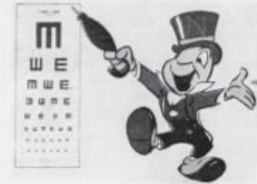
Chairman for the Junior League project is Mrs. Harry W. Massey who has been in charge of organization. "We've put in hours and hours of work planning and organizing. We're trying to avoid pitfalls before they happen."

"Our advisory board consists of representatives from the Ophthalmological Society and the Palm Beach County Otolologists who have donated their time and are very excited about the project. We have the complete endorsement of the Palm Beach County Medical Association. Above all, we want this program to be medically oriented, for the advisory board to guide us."

Be alert, parents, fast action may save your child's sight or hearing.



Photos By Ursula Seemann



Story By Phyllis McIntyre

CHECK THE EYES — (Opposite) Mrs. Charles Wooster, consultant from the Florida Society for the Prevention of Blindness in Tampa, instructs a class in eye screening for the Junior League. (Below) Mrs. Willard Rich Jr. administers the Hirschberg test to Terry Vest.



Ear Defect Causes:

- Inattentiveness
- Lack of response
- Bad grades, misbehavior in school.
- Delayed speech and language development
- Ear infections, complaints of pain.

POINT TO PICTURE — (Below) Testing Ricky Alford's hearing are (left) Mrs. Milton Engstrom, Dr. Moritz Shultz, audiologist at the Crippled Children's Clinic, Mrs. Donald Ayers, and Mrs. Stewart Vest. The new audiometer makes the test fun for children.



MAGIC SHOES — Mrs. Donald Ayers helps Ricky Alford Jr. into the "magic shoes" which are placed the proper distance from the eye chart for testing.



Parent, Be Alert To Child's Eye Trouble

Behavior
Rubs eyes excessively.
Shuts or covers one eye, tilts head or thrusts head forward.

Has difficulty in reading or in other work requiring close use of the eyes.
Holds book close to eyes.
Is unable to see distant things clearly.
Squints eyelids together or frowns.

Appearance
Crossed eyes.
Red-rimmed, encrusted, or swollen eyelids.
Inflamed or watery eyes.
Recurring styes.

Complaints
Eyes itch, burn or feel scratchy.
Cannot see well.
Dizziness, headaches, or nausea following close eye work.
Blurred or double vision.

Eye and Ear Today



Meaghan Flenner, Licensed Psychotherapist, Lic# MH12873 Psychotherapy for Women, Adolescents and Families

The good news is that with therapy, there is hope and an opportunity to learn and incorporate healthy coping skills. Together, we will identify and work through the challenges that are standing in your way from feeling and becoming your best self.

- Addiction / Substance Abuse / Behavioral Addictions
- Anxiety / Depression / Mood Disorders
- Abandonment / Attachment / Dysfunctional Family System of Origin
- Bereavement / Grief & Loss
- CAP- Certified Addiction Professional
- Career Challenges / Communication Skills / Public Speaking
- Disordered Eating Patterns / Body Image / Eating Disorders
- EMDR Trained in Trauma Resolution
- Prepare & Enrich Marriage Certified / Couples Communication Certified
- Relationships / Codependency / Divorce Care/ Mediation
- Self Esteem
- Stress Management
- Seniors / Older Adult Life Transitions

Call today for a
brighter tomorrow

MegCanHelp.com

MeaghanFlenner@
Gmail.com
561-371-8551



Two locations: Palm Beach Gardens and West Palm Beach

MAKING AN IMPACT

By Ashley Scharber

As one of the core principles of the mission of the Junior League of the Palm Beaches, we work to continually improve our community through the effective action of trained volunteers.

In order to be successful in making a significant impact on our community, the League chooses an impact area to focus its efforts and resources. Once a specific need has been identified, we set forth a strategic plan to help us reach our goals of making a positive change.

In 2013, JLPB began a year-long process in which members conducted an in-depth analysis of the needs of our community and researched and identified our current impact area of foster care. This issue-based initiative gave us the opportunity to focus all of our efforts on one issue in which we could bring about change.

At the time, foster care was a growing concern because there were simply not enough placement options available for displaced dependent children in the county. Within this one impact area, the research committee found that there were several groups that needed attention, including young adults who have aged out of foster care yet still have unmet needs, as well as unaccompanied minors, and children served by the Department of Juvenile Justice and the Florida Department of Children and Families.

The more they researched, the more they discovered a significant unmet need in our community. After compiling their research, analyzing the ways in which the League's existing programs could encompass this new impact area and presenting their findings to League members, foster care was officially voted in as JLPB's impact area in December 2013. We then fully integrated into the new focus area at the start of the 2015-2016 league year.

Since that time, JLPB has dedicated countless hours to volunteering with our community partners in order

to increase community awareness and resources to help children and young adults who are in the foster care system or who have been displaced from their homes and their families due to various reasons.

We continue to provide hands-on volunteering opportunities while also bringing in community leaders who help train and educate our members on the continuing needs of this community.

As we move into the second year of our work in this impact area, JLPB continues its great work in this community.

**IN OUR REGION,
THERE ARE CURRENTLY:**

1600
children in the foster care system

800
children removed due to abuse,
abandonment or neglect

60-70
children removed each month

300
licensed foster care families

WHY WE VOLUNTEER

Our lives are busy and consumed with so many different things, yet each of us dedicates a special part of our lives to the Junior League of the Palm Beaches. This organization has found a forever home in all our members' hearts. We dedicate our precious time to this league, which brings together so many remarkable women. All you have to do is look around to feel that there is something very special going on here.

THIS IS OUR BOND

This extraordinary energy has rippled through our community by way of our life-changing community programs. For decades we have touched the lives of thousands of children, adults and families. Every single member in her own unique way is a special part of this positive effect. No effort great or small is taken for granted. All you have to do is speak to someone whose life we have changed in a positive and beautiful way - forever. They are the ones who carry the message from our hearts and into the hearts of the community.

Imagine for a moment our community without the Junior League of the Palm Beaches and the life-changing impact of its community programs... It is an unimaginable thought because we all love our league, but it's a thought worth thinking about to feel, to really feel, the extraordinary change we have made and are still making. Imagine the thousands of lives of children and families that would not have been positively impacted. Imagine the message of hope and love that they would not be able to share with others who are in need.

Let us reflect for a moment upon several of our community programs and take a glimpse into the true heart of who we are as a league, because this is the part that others see when they reflect upon US. This is what others see in YOU when you tell them that you are a member of the Junior League of the Palm Beaches.

THIS IS WHY WE CARE.



By Sophia Stone, Board Member

PINK PALM BRIGADE: We provide thousands of essential living and school supplies to hundreds of children in our community every year that are in the foster care system. We have also literally stocked shelves of the only public resource center for homeless and foster care students within the Palm Beach County School District. Children have used our donations to comfort themselves in times of great need, giving them the DIGNITY and HOPE that every child deserves.

JUNIOR MINTS: We provide mentorship to children who have aged out of the foster care system. We do not forget these young adults and provide role-models to help them transition into independent living. Our dedication, love and support ensures that they stay on track and gives them a sounding board in their moments of weakness.

GIRLS EMPOWERMENT MENTORING SESSIONS (GEMS): We are the face of hope to children who are incarcerated. We bring new life to their dreams and the hope of a new future when they are released from the Juvenile Detention Center. We imprint in their memories the legacy of the Junior League and uplift them with the knowledge that there is an entire organization of women in their community that cares about them.

NELLE SMITH: We mentor and empower young women at the Nelle Smith Residence ages 13-18 that require long-term care due to histories of abuse and neglect. We do not turn a blind eye to these girls although sometimes it feels as though the world has turned a blind eye to them. We look at their issues directly when sometimes it is easier to look away. We bring hope and joy back into their lives.



Fundraising

DECK THE PALMS HOLIDAY MARKETPLACE



NOVEMBER 19, 2016
PALM BEACH COUNTY CONVENTION CENTER

By Alison Percy

The 8th Annual Deck the Palms will take place on Saturday, Nov. 19, 2016 from 9 a.m. to 4 p.m. at the Palm Beach County Convention Center. It will be an incredible day of shopping 140 diverse vendors consisting of women's, kid's and men's apparel, food and décor, and much more.

Deck the Palms is a family friendly shopping event with something for everyone. Children will enjoy the Zootopia themed activity area and carnival-like stilt walkers who will be entertaining us at the event throughout the day. Santa will be in attendance from 10:30 a.m. to 1:30 p.m. to take requests from little ones and, of course, pose for pictures.

En route to Santa, attendees will wind their way through the Deck the Palms Enchanted Forest featuring Christmas trees decorated by JLPB members to represent different areas of the League. The purpose of the Enchanted Forest is to educate the public on the work of the Junior League, especially our focus on foster care in Palm Beach County.

To enhance the shopping experience, purchase a VIP ticket for \$40. This year, the VIP Lounge will have a "Palm Beach Holiday" theme and will start off as a relaxing spa-like retreat in the morning, offering hand massages and other soothing features. It will then transform into a club-like atmosphere in the afternoon. This is a place to go and unwind with your girlfriends after an eventful day of shopping. The VIP ticket price includes two drink tickets, food, activities and entertainment.

The proceeds from Deck the Palms help fund JLPB's impact area of foster care in Palm Beach County, funding projects like Vita Nova, GEMS, Nelle Smith, DIAD, Kids in the Kitchen, and Eye and Ear Alert.

For an up-to-date list of vendors and information regarding Deck the Palms, please visit jlpb.org/deck-the-palms.





To start off the League year, the small fundraisers committee hosted a kickoff event at Bice Palm Beach on Sept. 9, 2016 with a theme of “Lady in Red.” The event was a record-breaking success with more than 200 attendees! League members and their guests, dressed stylishly in red, enjoyed passed hors d’oeuvres, fine cocktails and a silent auction.

Be sure to join the small fundraisers committee on Dec. 3rd for their next event, “Lady in Charge.” Details on page 24.



Graphics by: Adam Ross | AR Design

Photos by: ArtPhotoSoul Photographers | www.artphotosoul.com

SEPTEMBER GENERAL MEMBERSHIP MEETING



By Ashley Scharber

On Sept. 20, the Junior League of the Palm Beaches hosted its first general membership meeting of the 2016 year at PGA National Resort and Spa in Palm Beach Gardens.

While enjoying passed hors d'oeuvres and cocktails at the social hour before the meeting, members had the opportunity to mix and mingle and catch up with each other after the summer holiday.

JLPB President Beth Stevens then opened the meeting with welcoming remarks before executive team and board members shared important news and updates for the coming year.

In thanks for their years of service to the League, members who have been in JLPB for five, 10 and 15 years were recognized at this first general membership meeting. Ten-year members are pictured above in the top right photo and five-year members are pictured in the middle right photo.

We also recognized a few outstanding members who have gone above and beyond in their commitment to the League. Those pictured in the middle left photo received our Sunshine Recognition Award.

We were honored to be joined by Sarah Turner from Center for Child Counseling as our guest speaker for the evening. Turner gave an enlightening presentation about the profound effects trauma has on the development of young children.

This topic was particularly relevant given the League's focus on at-risk youth and foster children in our community, most of whom have experienced some form of trauma in their young lives.

Each month, the League strives to provide informative and inspirational meetings that further enrich our members' league experience.

NEW MEMBER BUS TOUR

By Ashley Scharber

In their first year of joining the Junior League of the Palm Beaches, new members spend time learning about the League and the impact it has on our community, along with the many ways they can contribute through volunteering.



Each year, new members start the league year with a tour of our community partners. On Sept. 17, 91 new members and recent transfers hopped aboard a charter bus and toured West Palm Beach through the eyes of the JLPB.

The bus made stops at Nelle Smith, Quantum House and Mounts Botanical Garden where the women were able to see firsthand the work that JLPB does in the community.

This year's group of new members consists of attorneys, teachers, analysts, realtors, doctors, nurses, business owners, stylists, brokers, trainers, interior designers, moms and so much more. They will play a vital role in shaping the League's next 75 years.



JUNIOR LEAGUE
OF THE PALM BEACHES

LADY IN
CHARGE

Shopping For A Cause



SATURDAY, DEC. 3rd

5% of all mall purchases registered at the information desks will be donated to the Junior League of the Palm Beaches.



Member Spotlight

ROBERTA H. JURNEY



Hometown: Palm Beach County

Current City: Palm Beach

Education: Springhill College BS

Occupation: Quantum House CEO

Years in the League: Since 1988

Why You Joined Junior League: My dear friend and past president Susan Poncy recommended it to me.

What Helped You Succeed in Junior League: From an organizational standpoint – knowing and understanding the by-laws, sticking to the agenda, being respectful of other League members, listening and learning. From a personal standpoint – meeting some of the very best friends of my whole life, becoming confident because of my leadership training, learning to work as a team, seeing projects through to successful completion

What Impact has JLPB had on Your Life: I'm fairly certain that I wouldn't be where I am today if it weren't for the League. You can take lots of classes, listen to webinars, read books on leadership, but it's the hands on, having to show up and make things work that really teach you what matters. Each placement I had, from cookbook to advisory planning to President, taught me about how important Palm Beach County is and that the strength of the women who live and volunteer here is like no other. On top of it all, we stuck together during good times and bad times in our personal lives and made sure that we were, and continue to be, always there for each other. And then, there's Quantum House, which has impacted me more than anything. To start a project from a committee suggestion to 15 years later as a much-needed non-profit serving thousands each year from around the globe, how do you beat that?

Advice for New Members: JLPB is about Palm Beach County and the children and families who live here and how we can improve their lives. It's not about you. Yet, if you do it right, you will benefit in more ways than you could ever have imagined. When others tease you about the JL stereotypes, be happy to tell them of the impact the League has made for more than 75 years in thousands of volunteer hours and dollars. That's when those white gloves come off!! Oh... and be sure to know about Mary Harriman.



Member News

Membership VP Report

By: Jean Thompson, membershipvp@jlpb.org

Transfer In:

Sidney O'Neill – Active – Boca Raton, FL
Elizabeth Ridley – Active – Charlottesville, VA
Ashley Costa – Active – Mobile, AL
Carrie Wanous – Active – Minneapolis, MN
Alisha Kelly – Active – Gainesville, FL
Rachele Dozois – Active – Tampa, FL
Romina Galvin – Active – London, England
Arianna McCoy – Active – Orlando, FL

Transfer Out:

Ali Strother – Active – Greenville, SC
Melissa Gifford – Active – Boston, MA
Katie Thomason – Active – Long Island, NY
Sohodra Singh – New Member – Central Westchester, NY
Jennifer Parker – Active – Kane and Dupage Counties, IL
Sachi Yannaccone – Sustainer – Orlando, FL

Reinstate:

Kristen Cashel

Member Count

223 Actives
15 Actives on Leave
29 Active Golds
8 Active Transfers In
92 New Members
290 Sustainer
4 Non-Resident Sustainers
17 Sustainer Inter-League
5 Sustainer Inter-League Palm Beach Home
11 Sustainer Transfers In
69 Sustainer Emeritus
4 Emeritus* Inter-League
2 Emeritus* Inter-League Palm Beach Home
2 Emeritus* Non Resident

TOTAL MEMBERS – 765

No longer with us

Wanda Jenkins, Past President



Former Junior League of the Palm Beaches President Wanda Jenkins passed away Oct. 1, 2016 after a tough year-and-a-half battle with a rare form of cancer that spread from her ear. Wanda started the Endowment Fund for JLPB and loved the League. She was so proud to be a member and past president and was known for her hospitality, warm and generous spirit, and commitment to her community. A memorial service was hosted in her memory at Memorial Presbyterian Church on Oct. 15, 2016.

Upcoming GMMs

December 2016

No GM meeting this month. Please join us at the holiday luncheon Dec. 10.

January 17, 2017

PGA National Resort & Spa, Palm Beach Gardens

February 21, 2017

DoubleTree Hotel, Palm Beach Gardens

March 2017

Cluster meetings

April 18, 2017

DoubleTree Hotel, Palm Beach Gardens

May 9, 2017

Annual Meeting and Dinner, TBA

Just Married



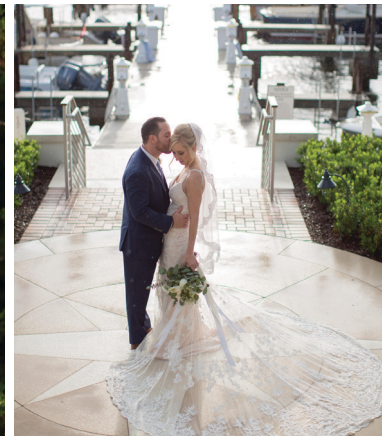
CRISTINA AND BILLY
HUNGERFORD
MAY 21, 2016
BREAKERS WEST,
WEST PALM BEACH



RACHEL AND DANIEL
TESSOFF
JUNE 25, 2016
MARCO ISLAND, FLORIDA



ANDREA AND WILLIAM
LEWIS
AUGUST 27, 2016
BIG SUR, CALIFORNIA



KELLY AND ERIK HLAVATY
SEPTEMBER 3, 2016
SAILFISH CLUB OF FLORIDA
ON PALM BEACH

BUNDLES OF JOY

Dana Hagan
welcomed baby boy
Zachary June 1, 2016.



Jessica Brees
welcomed baby
boy Parker on
May 31, 2016.



Allison Harper welcomed baby
boy Ryan Lee Harper on
June 22, 2016.



Jane Woodfield Morin
welcomed baby girl Clare
Barbara Morin on July 7, 2016.



Allison Fogg welcomed baby
boy Ellington "Eli" Sutherland
Fogg on September 26, 2016.



JLPB SUSTAINERS: GREETINGS FROM THE CO-CHAIRS

Thanks to the enthusiastic support and creativity of several ladies, there was no lull or suspension of Sustainers' activities during the summer!

Summer Daze Luncheons at the Sandpiper Club in June and at Seasons 52 in July provided relaxing seaside settings for sharing vacation photos and plans for travel. JLPB President Beth Stevens and President-Elect Noemi Coltea were our guests at Carmine's Trattoria in August, sharing ideas for expanding Sustainer involvement and support of JLPB community projects.

In June, Carol Micken initiated and organized what was to be the first of three Casual Summer Bridge events at JLPB Headquarters followed with lunch at French Bistro.

Once again, the Evening Book Club continued throughout the summer, meeting at different restaurants, offering the double enjoyment of "dining out" and discussing the latest book of the month. September saw the resumption of the Daytime Book Club's monthly "Lunch & Lit."

The 20 reservations for Debra Cannava's always-popular Dine Around – this year at Café Europe – were snapped up quickly. This is a reminder to Sustainers to RSVP immediately when you see "Save the Date" for events in the Sustainer E-blast as some 'popular' events fill quickly.

Sabra Ingeman's Sustainer October Golf Outing at Lighthouse Cove was the perfect chance to "swing" at a mini golf tournament. A post game lunch at Sinclair's Ocean Grill welcomed all!

Responses to Darlene Hanes Duplesis and Yvonne Patterson's welcoming invitation to the Nov. 12 Fall Sustainer Brunch at Michelle Schimmel's home were immediate as were the culinary treats guests promised to bring.

As we move into our busy Holiday calendar, please take note of the bi-weekly e-mail Sustainer E-blasts from the Sustainer E-Blast Editor, Margaret Schuemann.

RSVP immediately to the appropriate hostess of the events of special interest to you.

We wish you all the happiest of Holidays!



**Joan Jones and
Betsy Vaughan**
JLPB Sustainer Chairs
Joan: jmj2@uwm.edu
Betsy: rvbv19cros@aol.com

Joanie and Betsy



SUSTAINERS LEND A **HELPING HAND**



In the summer of 2015, Sustainer Co-Chair Joan Jones and Sustainer Liaison Meaghan Flenner established the Helping Hands Committee to coordinate, facilitate and support Sustainers' involvement in JLPB community projects and activities. The first

undertaking was restocking the Nelle Smith Residence for Girls kitchen where, each month, Actives spend an evening cooking with the residents. Each December, Sustainers host a Holiday Decorating Luncheon. Last year, in addition to fashioning decorations, Mary Kurtz and Liz Shapiro introduced the girls to holiday treats, including icing cupcakes with fanciful designs and making Ambrosia Salad, which residents found so "yummy" it was added to the Nelle Smith menus.

The Fall Sustainer Brunch was the "Kick Off" for our major project of furnishing a Library/Common Room in the Vita Nova Village apartments for young women who have "aged out" of the foster care system. Throughout the year, Sustainers donated books, DVDs and games on the residents' wish list.

Funds raised through Sustainers' generous support of the Gretchen Scott "Sip and Shop" (pictured) and other donations made possible what 2015-2016 Vita Nova Chair Courtney Stafford Hickey described as "Christmas in May." The purchase of extensive electronics, including a 40" TV, DVD Blue Ray player, Apple TV, HP inkjet printer and fax, and an entertainment center fulfilled Sustainers' promise to furnish the Vita Nova library.

Finally, the Sustainers sponsored a "Girls Night In" at Nelle Smith where the girls' artistic talents were expressed in colorful canvasses they created at a painting party. Some of the canvasses were donated for renovated Vita Nova apartments, while others don the walls of their Nelle Smith rooms. Sustainers' enthusiastic participation in various community projects underscores the continued interest of many in volunteering.

In May, Meaghan Flenner introduced Joan Jones to the 2016-2017 Sustainer Liaisons Lisa Bagocius and Heather Moe Sherrod and together they have been scheduling and formulating interactive community projects and activities.

This year's Lunch and Holiday Decorating at Nelle Smith will be Dec. 3. Other Sustainer events in the planning stages are another "Nelle Smith Girls Night In" activity where a Sustainer will share her talent or interest, such as fashioning inexpensive room decorations and/or inviting Nelle Smith or Vita Nova residents to an afternoon at the Norton museum with lunch at a nearby restaurant.

In June, several Sustainers toured Quantum House with Kathy McHale. They were impressed by the facility and their care of families with very sick children. Currently, they are selecting dates when they will provide and/or prepare lunch or dinner for the Quantum House families.

Sustainers have endless expertise and talents. If you have suggestions for additional Helping Hands projects or simply wish to explore an idea for one, please contact Joan Jones jmj2@uwm.edu or 561-371-0140, Lisa Bagocius lisa.bagocius@sanofipasteur.com or Heather Moe Sherrod heather@rodmoecpa.com.



EXPERIENCED BRIDGE – BEGINNERS’ BRIDGE

Please join us at 10 a.m. on the first Thursday of each month from December through April. New players are welcome to join us. Feel free to bring a guest and enjoy a morning of bridge and lunch. Please send your check in the amount of \$30 per monthly bridge/lunch to Betsy Vaughan, 105 Paradise Harbour Blvd. 506, North Palm Beach, Florida, 33408.

Questions: Betsy Vaughan, rvbv19cros@aol.com or 561-841-7815.

Our Beginner Tables are up and running, contact Cindy Vogel if you have any questions, cindyvogel67@yahoo.com or 804-347-8826.

Bridge and Lunch

December 1 – Lost Tree Club, Edna Strnad

January 5 – Beach Club, Reina Sinni

February 2 – Beach Club, BoBo McKenney

March 2 – Beach Club, Laura Warner

April 6 – PGA National, Patty Steerup

Walk and Talk

WALK AND TALK... EXPLORING PALM BEACH COUNTY ON FOOT

Please join us from 9:30 a.m. to 11 a.m. on the first Monday of each month from November through May. We will meet at the North Palm Beach Community Center, located at 1200 Prosperity Farms Road, North Palm Beach. We will carpool to an ‘interesting place’ and walk and talk for an hour – exercise and fellowship. If you are interested in joining us please call or email Donna Wright 561-346-7641-home or 561-346-7641-cell, donnablwright@gmail.com or Betsy Vaughan 561-841-7815, rvbv19cros@aol.com.

Sustainers Leadership

Joan Jones and Betsy Vaughan, Sustainer Co-Chairs

Margaret Schuemann, Editor, Sustainer E-Blast

Sabra Ingeman, Active Liaison for Sustainers

Lisa Bagocius and Heather Moe Sherrod, Sustainer Liaisons



UPCOMING SUSTAINER EVENTS

Future twice-monthly Sustainer E-blasts will have all the details for these events and regular activities. For now, mark your calendars and save the dates!

DECEMBER

- 1 Bridge & Holiday Lunch, Lost Tree
- 3 Lunch and Holiday Decorating at Nelle Smith House
- 10 JLPB Holiday Luncheon
- 13 Evening Book Club Holiday Party
- 14 Festival of Trees at Ann Norton Sculpture Gardens
- 15 Lunch & Lit Holiday Book Exchange
- 17 Holiday Cookie Exchange

JANUARY

- 5 Bridge & Lunch, Beach Club
- 9 'Walk & Talk'
- 10 Evening Book Club
- 19 Happy Hour – Wine Not?
- 26 Lunch & Lit – Daytime Book Club
- 30 "Ladies Who Lunch"

FEBRUARY

- 2 Bridge & Lunch, Beach Club
- 2 Dinner and a Show, 'Evita' at Lake Worth Playhouse
- 6 'Walk & Talk'
- 7 Evening Book Club
- 11 Sustainer "Notte Italiano" Dinner Party
- 16 Lunch at Ann Norton Sculpture Gardens
- TBA Gretchen Scott Designs Sip and Shop Fund Raiser & Dine-Around
- 23 Lunch & Lit – Daytime Book Club

MARCH

- 1 Tour of Palm Beach Antiques & Design Center and Lunch at Belle & Maxwell
- 2 Bridge & Lunch, Beach Club
- 6 'Walk & Talk'
- TBA Love of Literacy Luncheon – Literacy Coalition
- 9 Croquet Event, PGA National
- 14 Evening Book Club
- 16 Happy Hour – Wine Not?
- 23 Lunch & Lit – Daytime Book Club

APRIL

- 3 'Walk & Talk'
- 6 Bridge & Lunch at PGA National
- 11 Evening Book Club
- 20 Happy Hour – Wine Not?
- 25 Spring Golf Outing
- 27 Lunch & Lit – Daytime Book Club

MAY

- 1 'Walk & Talk' – Donna Wright/Betsy Vaughan
- 9 JLPB May Dinner
- 9 Evening Book Club
- 25 Lunch & Lit – Daytime Book Club

Address and postage area

DECK THE PALMS

HOLIDAY MARKETPLACE

HOSTED BY JUNIOR LEAGUE OF THE PALM BEACHES, INC.



Save the Date!

NOVEMBER 19, 2016

AT THE PALM BEACH COUNTY
CONVENTION CENTER



WWW.JLPB.ORG/DECK-THE-PALMS · FIND US ON FACEBOOK: WWW.FACEBOOK.COM/JLPBDECKTHEPALMS/