



UNDERCURRENTS

SPRING 2016 | JLPB.ORG



A CELEBRATION OF
75 YEARS OF SERVICE



OUR MISSION

Junior League of the Palm Beaches, Inc. is an organization of women committed to promoting volunteerism, developing the potential of women and improving communities through the effective action and leadership of trained volunteers. Its purpose is exclusively educational and charitable.

ABOUT JLPB

FOUNDED BY **15** COMMUNITY-MINDED WOMEN IN 1941

the Junior League of the Palm Beaches has grown to

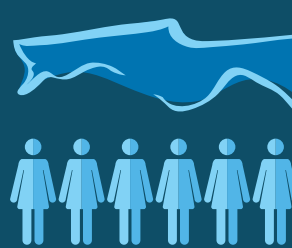
750 MEMBERS

in its



year

TRAINING VOLUNTEERS



600+ WOMEN

participated in JLPB's 1st year training program in the past 10 years

LOCAL COMMUNITY

- NPO BOARD MEMBERS AND EXECUTIVES
- PROGRAM DEVELOPMENT
- RAISING FUNDS AND SUPPORT
- CREATE AWARENESS AND ADVOCACY

COMMUNITY IMPACT



OVER 15,000
volunteer hours in
the last 10 years

\$3.4 MILLION

to the local community in 75 years

IDENTIFY
UNMET NEEDS

CREATE
COMMUNITY SOLUTION

CONTACT US

JUNIOR LEAGUE
OF THE PALM BEACHES

561.689.7590 • WWW.JLPB.ORG



CONTENTS

SPRING 2016

| | |
|----|----------------------------------|
| 5 | Letter from the President |
| 6 | Letter from the Editor |
| 7 | Committee News |
| 8 | Pink Palm Brigade: Julio's Story |
| 9 | Advocacy in Action |
| 10 | An A-Z Guide to JLPB |
| 12 | A Charitable Dilemma |
| 14 | Deck The Palms: Recap |
| 15 | Contemporary Cotillion |
| 16 | Living the Mission |
| 18 | 2016-2018 Strategic Plan |
| 22 | 75th Anniversary Gala |
| 25 | Extreme Makeover Project |
| 26 | Member News |
| 27 | Membership Report |
| 28 | Sustainers' Update |

CREDITS:

Editor & Designer: Nicole Ehrlich

Thank you to this year's Undercurrents committee: Kristin Aiello, Kristen Kumar, Samia Pedalino and Ashley Scharber ***Advertising Lead Active:*** LaDona Alvarez

UNDERCURRENTS

THE JUNIOR LEAGUE OF THE PALM BEACHES
Issue 1, Vol.56



BOARD OF DIRECTORS

PRESIDENT Laura Russell
PRESIDENT ELECT Beth Stevens
EXECUTIVE VP Morgan Richardson
NOMINATING Xiomi Murray
SECRETARY Stacy Cirrito
TREASURER Sarah Garcia
BOARD MEMBERS
Noemi Coltea
Jessica Pinsky
Sophia Stone
Amy Quattlebaum
MelodieVanderbaan

EXECUTIVE COMMITTEE

EXECUTIVE VP Morgan Richardson
EXECUTIVE VP - ELECT Ilene Passler
COMMUNICATIONS VP Dana Hagan
COMMUNITY VP Allison Fogg
FUNDRAISING VP Shelly Albright
MEMBERSHIP VP Lauren King
TREASURER ELECT Ashley Cejka

SUSTAINER BOARD

CO-CHAIRS Joan Jones, Betsy Vaughan
LIAISON Meghan Flenner, Christine Walter

COMMUNICATIONS COUNCIL

EBLASTS Jasmine Kapoor
PHOTOGRAPHER Tami Borland, Kristie Wells
PUBLIC RELATION Dana Hagan, Jaime Bitzer
UNDERCURRENTS Nicole Ehrlich
VIDEOGRAPHER Melodie Veverka
WEBSITE Carrie McDonald, Christine Kirsch

COMMUNITY COUNCIL

ADVOCACY Melissa Norman, Robbyn Ackner
75TH ANNIVERSARY COMMUNITY PROJECT
Stephanie Pittington, Courtney Hickey
COTILLION Valerie Radosevich, Camryn Del Rio Linton
DONE IN A DAY Carley Bockmeyer, Kristina Abarquez
EYE AND EAR ALERT Kelly Spencer, Courtney Scianandre Klahre
GEMS Brittney Gutin, Catherine Anido
GRANT WRITING Abby Carroll, Megan Rogers
NELLE SMITH, Cara Chieffallo, Julie Maddaleni
PINK PALM BRIGADE Michelle Gardner, Elizabeth DeBrule
JUNIOR MINTS Marcelle Burke

MEMBERSHIP COUNCIL

ARRANGEMENTS Elizabeth Rahm, Jenn Brown
EDUCATION AND TRAINING Brittany Tuten
HEART OF THE LEAGUE Marty Rogge, Analisa Muti
INTERNAL MENTORING Tricia Taeger
NEW MEMBERS Dana Ross, Kristin Kellogg
PLACEMENT Tiffany Jackson, Melissa Perry
POINTS TRACKERS Clare Gerard, Sarah Gatewood
SUSTAINER LIAISON Meghan Flenner, Christine Walter
SPECIAL EVENTS Meredith Cruz, Allison Harper
TRANSFERS April Chamber, Sophie Frabotta

FUNDRAISING COUNCIL

COOKBOOK Sabrina Browning
DECK THE PALMS Angela Sarlo, Elena Peroulakis
DONOR RELATIONS Jeana White
EVENT TREASURER DTP Kristen Laraia
EVENT TREASURER GALA Melissa Gifford
GALA Camille Murphy, Angela Vecellio
PLANNED GIVING Caitlin Campbell
SMALL FUNDRAISERS Gayla Bujnowski, Andrea Robinson

HEADQUARTERS

OFFICE MANAGER Laura Burke
470 Columbia Drive, Building F
West Palm Beach, Florida 33409
Phone: 561.689.7590
hq@jlpb.org | www.jlpb.org

OFFICE HOURS: Tuesday, Wednesday, Thursday 9:30 a.m. to 1:30 p.m.
September through May

Junior League of the Palm Beaches, Inc. Women building better communities.*

UNDERCURRENTS is the magazine of the Junior League of the Palm Beaches, Inc. UNDERCURRENTS is published bi-annually. UNDERCURRENTS is distributed to Junior League Active, Sustaining, and Provisional Members as well as community supporters. Circulation is 800+ with an estimated readership of 2,000-2,400. THE JUNIOR LEAGUE OF THE PALM BEACHES is a nonprofit 501(c)(3) organization of trained women volunteers. THE JUNIOR LEAGUE OF THE PALM BEACHES positively impacts children and young adults in the foster care system. THE JUNIOR LEAGUE OF THE PALM BEACHES specializes in community partnerships. This publication contains paid advertising and such advertisements do not necessarily reflect the endorsement of the products of services by THE JUNIOR LEAGUE OF THE PALM BEACHES.

Letter From the President



strength, beauty and brilliance.

These are all adjectives to describe the diamond, the symbol of the 75th anniversary. They're also powerful, accurate words to describe the Junior League of the Palm Beaches.

Growing from 17 founding members to over 750 phenomenal women today, we are the longest standing, all women's service organization in Palm Beach County.

I've been honored this past year to represent you, members who are entrepreneurs, who work in hospitals and at nonprofits, who govern our County and so much more. You set the standard, committing yourself equally to your professional and personal goals, along with the League's mission and programming.

This year has been an incredible year of celebration for the League. It has also been an important year for reflection and evaluation. As we grow and adapt to our membership and community, the Board spent considerable time developing a Strategic Plan to guide our League toward a strong and vibrant future built on the legacy of our founding members. I encourage you to take a few minutes to read about the process on page 18.

I am so proud of what we accomplished together this year. Check out the renovation photos from Phase 1 & 2 of the Vita Nova project, which are so much more than spaces.... these are homes that are empowering young women in our community to achieve the greatest heights. The gala was hugely successful, gathering friends, sustainers and supporters from all decades of membership. We also raised significant funds to invest back into our endowment, as well as invest back in our community projects and programs. The Junior League hosted a record breaking Deck the Palms; doubling attendance and shattering fundraising goals! Past presidents joined us for general membership meetings to share memories and milestones from the past 75 years, and we proudly increased our new member numbers and welcomed 90 ladies in this year's class. What a tremendous year!

It has been my pleasure to serve as the 2015-2016 president. I look forward to watching continued growth and success of our League for years to come.

Laura Russell

President
2015-2016

Letter From the Editor



As this issue came together, I was in awe at how much the League was able to accomplish in just a few short months. As part of the 75th Anniversary Extreme Makeover Project, our members rolled up their sleeves to renovate *eight* living units for the Vita Nova residence (pg. 25) and organized and hosted a beautiful 75th Anniversary Gala to celebrate the League's 75 years of community service, all in addition to typical League projects and programming.

While it's impressive to see what the League is capable of as a whole, I also deeply admire our members who go a step further to leave a positive impact on others. Read Morgan's journey as a foster parent on page 16 and read about how two members went above and beyond for a local boy in need on page 8.

It's been an exciting time to be a part of the League's growing communications efforts, and it's been a privilege to be a part of Undercurrents. I look forward to serving the council again as the 2016-2017 Publishing chair.

Nicole Ehrlich

Undercurrents Editor
2015-2016

Upcoming GMMs

September 20, 2016

PGA National Resort & Spa, Palm Beach Gardens

October 2016

Cluster meetings

November 15, 2016

PGA National Resort & Spa, Palm Beach Gardens

December 2016

No GM meeting this month. Please join us at the holiday luncheon Dec. 10.

January 17, 2016

PGA National Resort & Spa, Palm Beach Gardens

February 21, 2016

DoubleTree Hotel, Palm Beach Gardens

March 2016

Cluster meetings

April 18, 2016

DoubleTree Hotel, Palm Beach Gardens

May 2016

Annual Meeting and Dinner, TBA



Improving Communities

PINK PALM BRIGADE

JLPB's Pink Palm Brigade made a delivery of essential supplies to Friends of Foster Children of Palm Beach County, Inc. (FFC).

These supplies will be used to help fill FFC's emergency bags, which are given to children who are entering the foster care system. FFC provides supplies and other support for children and care givers.



GRANTS

The League's grant committee was fortunate enough to receive \$28,000 from the Great Charity Challenge on February 6, 2016.

The Great Charity Challenge is a fun event and great opportunity for the equestrian world to give back to the community. The League was selected among 37 charities and assigned a team of professional horse jumpers who participated in a relay-style equestrian jumping competition. The purpose of the event is for each charities "horse jumping team" to compete against each other and try to win the most amount in donations by being the fastest team.

JLPB came in 14th place, walking away with \$28,000 from the nights event and is excited to be able to use that money towards the foster care initiative in the League. - Samia Pedalino



SMALL FUNDRAISERS

JLPB raised \$7,829 during The Great Give 2016, a 24-hour online giving event led by the Community Foundation for Palm Beach County, United Way of Palm Beach County and United Way of Martin County. These generous donations will go toward future JLPB community projects, postively impacting children and families of Palm Beach County.

WWW.GREATGIVEFLORIDA.ORG





Well-suited for The occasion

By: Michelle Gardner & Nicole Ehrlich

Julio is a high school senior who has aged out of the foster care system. He lived homeless on the streets of Honduras for four years after his parents passed away, before coming to the US when he was 16. He currently lives in West Palm Beach with a single mother who took him in and gave him a place to live.

Last school year, Julio attended Royal Palm Beach High School where he was a member of the Art Honor Society. When Julio transferred to Forest Hill he was surprised that there was not a chapter of the AHS there, so he started his own.

The newly founded chapter of AHS had an induction ceremony for the students at the Norton Museum, where each inductee had a piece of their art work displayed. They hosted a reception and Julio, as the president and founder of the chapter, was scheduled to be key note speaker. Julio had no clothing appropriate for the occasion. He was going to wear the shirt and pants he would normally wear to class.

H.E.A.R.T, a new JLPB partner within the community reached out to Pink Palm because of the committee's mission to get emergency items to kids who are either in foster care, awaiting placement in foster care or who have aged out of the foster care system.

Pink Palm quickly put out the word to the community via Facebook and between the Pink Palm committee and Shelly Albright, Fundraising VP, Julio was provided with clothes that would make him look professional and feel proud.

Pink Palm chairs Michelle Gardner and Elizabeth Debrule went to the induction ceremony at the Norton and were moved to tears by his speech.



Michelle Gardner & Elizabeth Debrule, Pink Palm Co-chairs, with Julio, dressed for success in his clothes from Pink Palm.

“It was obvious that he put a great deal, of thought and planning into his speech, quoting Ralph Waldo Emerson, Mother Teresa and Michael Angelo,” Michelle Gardner said. “Julio has overcome what seem to be insurmountable odds and is a bright, well mannered and motivated young man who we know will achieve great things in life.”

Julio is going to Canada this summer for national guard training and returning to West Palm Beach to attend Palm Beach State College.

ABOUT H.E.A.R.T

H.E.A.R.T. is a group of case managers and foster care liaisons working within the public school system. The foster care liaison receives information about children being removed from their home and awaiting foster care placement. The case managers work with the area schools to support these children with the necessary services during this transition and throughout the school year. They also identify students who are couch surfing, to give them support.

H.E.A.R.T. works closely with Pink Palm's community partners: Friends of Foster Care, Hannah's Home and the League partner's Vita Nova and Nelle Smith. Pink Palm is now supporting three of H.E.A.R.T's identified students who received scholarships and went on to college.



ADVOCACY IN ACTION

By: Nicole Ehrlich



advocacy /advəkəsē/ noun. 1. public support for or recommendation of a particular cause or policy.

There are many serious societal issues affecting those in our own backyards that weigh heavy on our hearts. Junior Leagues across Florida recognize these issues and ask, how can we get those in power to instigate change? How can we put laws in place, or amend laws to better serve the women, children and families in our community?

The JLPB advocacy committee plays a role in monitoring and advocating for these issues as part of a larger body: The Junior Leagues of Florida State Public Affairs Committee.

The Florida State Public Affairs committee (SPAC) represents 21 leagues and approximately 11,000 women in Florida. Each individual League's advocacy committees work together in unison through SPAC to advocate for important issues.

This January, Esther LaBovick, Terri Fekete, and Melissa McKinlay represented The Junior League of the Palm Beaches at the SPAC conference in Tallahassee.

The issues prioritized for the 2016 legislative season included bills that would improve education and help at-risk youth.

Examples of education improvements included imposing requirements for high school financial literacy and instating a sales tax holiday for clothing, school supplies, and personal computers.

Examples of bills and amendments for at-risk youth include: require certain licensing boards to require licensees to complete a continuing education course on human trafficking as a condition of re-licensure and amending the definition of child pornography to include morphed imaged or child pornography so persons who possess these images can be held criminally liable.

Members of SPAC will advocate for these issues throughout the year by going before the House and Congress and asking for support for the proposed bills.

CROSS CURRENTS



Did you know that Undercurrents, was previously titled Crosscurrents?

An A-Z Guide to JLPB

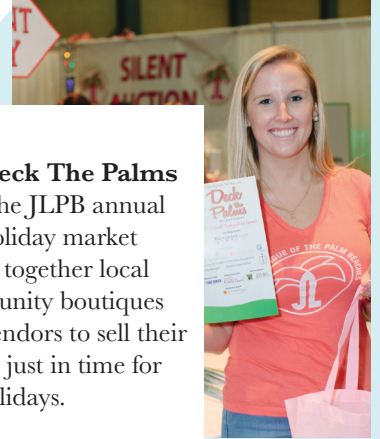
A quick guide to what the Junior League of the Palm Beaches is all about!

By: Nicole Ehrlich

D

Deck The Palms

The JLPB annual holiday market brings together local community boutiques and vendors to sell their goods, just in time for the holidays.



E

Ear & Eye Screening/Alert

Since 1968, this JLPB signature program has provided free vision and hearing screenings to preschoolers to detect problems for effective correction.

F

Fundraising The League is able to function and give back to the community through a variety of fundraising initiatives, including small fundraisers, grants, and events such as Deck The Palms.

G

GEMS (Girls Empowerment Mentoring Sessions)

GEMS is a community program that serves girls while they are detained in a juvenile detention center. The goal of the program is to teach skills, instill hope, offer support and to empower the girls in an effort to reduce recidivism.

H

History JLPB has a rich history. Established as the Junior Welfare League, its main focus was to support the war effort. With many World War II training bases in Palm Beach County, the League hosted canteen events for servicemen and worked with the Red Cross.

A

AJLI The JLPB umbrella agency, AJLI is a vast network of more than 150,000 women in 291 leagues throughout the United States, Canada, Mexico and the U.K.



B

Beautify

JLPB loves to beautify the community! Past projects have included building The Fun Zone Community Playground project at Gaines Park, and current projects include apartment renovations at the Vita Nova Village.

C

Cotillion The first League Cotillion class was conducted in 1958. Today, Cotillion is able to share valuable lessons through dance and social etiquette education with a diverse group of children in Palm Beach County.

I **Impact** From creating baskets filled with items to make the transition from foster care to college easier and renovating entire apartments for kids who have aged out of the foster care system, to advocating for children in the foster care system, the League has made a BIG impact in the local foster care system, which has been the League's impact area for the last three years.

J **Junior MINTS** One of the League's newest initiatives, Junior MINTs is a program that mentors, nurtures and improves the lives of the mentees at the Vita Nova Residence.

K **Kids in the Kitchen Event** This event is geared toward school-aged children and emphasizes the importance of healthy food preparation, good nutrition and exercise. The project is run entirely by the JLPB new member class and is held at the South Florida Science Museum.



L **Leadership**
JLPB grows great leaders! The League is a safe space to develop and flex that leadership muscle. Whether you chair a committee or serve as the President, the League offers retreats and trainings that prepare you for the role and give you valuable hands-on experience.

M **Members** The Junior League of the Palm Beaches is 750 members strong!

N **Nelle Smith** Since 2000, the Junior League of the Palm Beaches has been providing mentoring to girls of the Nelle Smith Residence ages 12-18. The goal is to empower the girls to build self-esteem and learn life skills, furthering the League's mission to develop the potential of women.

O **ODI** Organizational Development Institute is a three-day training that arms leaders with tools to improve the league. Multiple JLPB members attend each year.

P **Partnerships**
The League is incredibly grateful for community partners that help the League achieve its goals. Partners include: The Special Olympics, Boys Town, Mounts Botanical Garden, The South Florida Science Museum and Aquarium, Vita Nova, The Palm Beach County Food Bank, Child Net and Dress for Success.



Q **Quantum House** When the house opened in May 2001, the League was responsible for the recruitment and training of volunteers to staff the house. Today the League volunteers to cook meals through the Chef for a Day Program.

R **Recognition** In honor of our 75th anniversary, the League was recognized by the Palm Beach County Commission for our legacy or impact in the community.

S **Sustainers** Sustainers are members who have served 8 or more years as active members. While they may no longer have volunteer commitments, they are still very much involved and committed to the League and support League functions and initiatives.

T **Trainings** Educating members and developing the potential of women is an important part of the JLPB mission. JLPB trains new members through a one-year training program and regularly holds trainings for members to develop their abilities to ensure their time volunteering in the community is well spent.

U **Undercurrents** Yes, this very magazine that you are holding! In 1949 the League began printing Undercurrents (originally called Crosscurrents) which was one of the main forms of communication for the League. Today Undercurrents is printed bi-annually to celebrate accomplishments and spread the news about projects and initiatives.

V **Voluntarism**
The League has served more than 15,000 volunteer hours in the last 15 years.



W **Working Women**
"Approximately 90% of our members work full or part-time - the women in our League are busy women who make time for the League" - Beth Stevens, 2016-2017 President.

X **Excel** JLPB members aim to excel in all things they do! From tackling new challenges, to making new friends and undertaking leadership roles, our members are not afraid to engage and excel.

Y **Years** In 2016 The Junior League of the Palm Beaches celebrated 75 Years as a League.

Z **Zest** A zest for life and voluntarism is ever-present in JLPB members. Whether they are selling cookbooks, plucking litter off the beach or

A Charitable Dilemma

By Sophia Stone

I was in the storage room at Headquarters the afternoon Laura Burke joyfully called out to me from her desk, “Sophia, a lady called about donating some kitchen pots and utensils to children in foster care. I have her number here for you. I told her you would call her back.”

My eyes widened with happy curiosity, but I couldn’t say a word. I was balancing an overflowing laundry basket filled with living essentials on my tippy toes on top of a wobbly step stool determined to place it on the very top of our shiny, yet sometimes shaky metal shelves, even though the top of those shelves seemed like Mount Everest. Balancing it all could have been a skit straight out of “The Lucy Show!”

“Sophia?” I heard Laura’s cheerful voice again with a tinge of concern. My desire to want to answer her right away is what gave me the strength and balance to finally lift the stockpiled laundry basket over my head and onto the top of those shelves. Catching my breath quickly I peeked my head out of the storage closet and eagerly jotted down Mrs. Beebe’s number.

Her gentle voice on the other line echoed the generosity and sincerity of her heart even though at that time, over two years ago, she had a charitable dilemma. A dilemma she knew the Junior League of the Palm Beaches could surely resolve. She was confident, being a former Junior Leaguer from Rumson New Jersey, that the our League could help her. Doubled by the fact that her charitable dilemma centered around children who have aged out of foster care, she had absolutely no doubt we would. And she was right!



“I always loved to cook,” Mrs. Beebe said delightfully and it brought her great joy to also teach others to cook, especially children. Teaching is something that comes easily to her because she was a beloved schoolteacher for many years. She also, at that time, was a dedicated foster parent to a girl named Ashton with whom she kept in contact even after she aged out of the foster care system.

When Ashton graduated from high school, Mrs. Beebe planned a huge celebration for her. “It was bigger than a party. It felt like a wedding”, Mrs. Beebe told me as she recalled that beautiful memory. Ashton received, “everything she ever needed,” to transition to college and live independently.

Remembering how Ashton received all her college supplies, including living and kitchen essentials, Mrs. Beebe was inspired years later to organize what she called her first “Pot



Party". Her mission was to help other children, who like Ashton, were aging out of the foster care system and transitioning into independent living.

I offered to come to the party on behalf of the Junior League of the Palm Beaches' Pink Palm Brigade and pick up the packages and deliver them to Vita Nova. When I arrived at Mrs. Beebe's home I was amazed at how she seamlessly organized an assembly line of enthusiastic and loyal friends and neighbors to individually organize and wrap perfectly appointed packages with gently used kitchen essentials each placed inside a shiny pot.

Soon my car was bursting with sparkling packages wrapped in pink and red bows and crocheted potholders handmade by Mrs. Beebe herself. I had to joyfully and swiftly recruit a fellow committee member, Elizabeth DeBrule, to help me deliver all the donations.

When all the packages were delivered with help from Vita Nova there was literally no room for anyone to sit in their lobby. The floor, tables, chairs and sofa were all filled with donations. Amanda Meyers, the resident manager of Vita Nova was speechless. The generosity of Mrs. Beebe and the partnership with the Junior League of the Palm Beaches to make her dream come true was able to impact the lives of every single resident at Vita Nova.

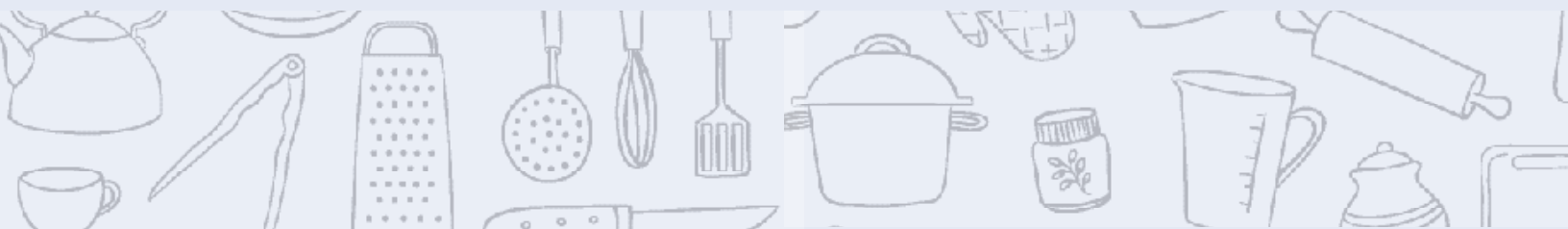
So...when Mrs. Beebe called again this year to discuss the 2nd Annual "Pot Party," I think I said, "Yes!" before she even finished speaking. It complimented our Vita Nova 75th Year Anniversary Project perfectly! I quickly reached out to

Marcelle Burke the committee chair of our newly formed Junior Mints Committee, which mentors the residents at Vita Nova. Marcelle agreed that this year it would be a wonderful opportunity for her committee members to interact with fellow members in our community with the same passion for helping children aging out of the foster care system.

The Junior Mint Mentors could share in the joy of receiving these essentials alongside the residents at Vita Nova as well as have the opportunity to answer any questions they may have about using any of the items. This in many cases would be the first time any of the residents would own and/or use their very own kitchen essentials.

Mrs. Beebe was delighted to welcome the Junior League of the Palm Beaches and our Junior Mint Mentors, Mirna Winn, Cindy Biernat and Crissy Hawkins to her party on February 7, 2016. Having this heartfelt link directly to the young adults her packages would benefit was a blessing. It completed her vision as well as impacted our mission. A total of thirty-one packages or "31 bundles of love," as Mrs. Beebe would say, were assembled, wrapped and delivered.

Mrs. Beebe envisions that her annual pot party will continue to grow and joyfully welcomes the help of the Junior League of the Palm Beaches for another successful year, supplying kitchen essentials to children who have aged out of the foster care system. I can't wait for her call again in our new 2017 League year!





Let's Flamingle!

THE 2015 DECK THE PALMS HOLIDAY MARKET

Photos by: Kristie Wells





Photo by: Kristie Wells

By: Kristin Aiello

Cotillion's mission is cultivating young people to develop, appreciate, and respect their roles in society through dance and social etiquette education. Camryn Del Rio, Co-Chair of the committee and mother of children who have been enrolled in Cotillion, shares with us some of the highlights of the 2015-2016 season.

The Cotillion program is the Junior League of the Palm Beaches longest running program. Cotillion just wrapped its 57th season! And this year's class is the largest we had in quite some time. With over a dozen participating schools, Cotillion is able to share these valuable lessons with a diverse group of young women and men in grades 6-9 in our county.

Manners, introductions, and table settings continue to be mainstays of the teaching. But to stay relevant in the age of digital communication, Cotillion has added social media etiquette and online safety to its curriculum, while still emphasizing the importance of personal contact in relationships. One of the more valuable lessons discussed this year is the notion of privacy and what is and isn't appropriate to share online with strangers and friends.

But let's not forget about the fun! The children really enjoyed the ballroom dancing portion, letting their personalities shine as they strengthened their interactions with others. Each month centered around a theme and the kids dressed accordingly. This year's themes included "Groovin' in the Graveyard", "Turkey Trot", "Snowflake Ball", "Country Hoe Down", "Cupid's Ball" and finally the "Red Carpet Ball" where they could demonstrate their new skills to family and friends. The children especially enjoyed the Hoe Down and wore boots, spurs and bandanas. The Holiday session was a standout at beautiful and historic Mar-a-Lago club. A gift exchange encouraged thoughtful courtesy as each boy brought a gift for a girl and vice versa. This emphasized a key lesson and bringing joy to others, especially around the Holidays.

To learn more about Cotillion or enroll a student please contact cotillion@jlpb.org. Camryn also recommends *The Emily Post Guide to Etiquette* as Summer reading for those interested in Cotillion.



Living the Mission

By: Ashley Scharber

According to the most recent data from the Adoption and Foster Care Analysis and Reporting System (AFCARS), in 2014 there were well above 400,000 children in the United States in foster care. That astonishing number also represents a four percent increase from 2012, signaling a growing need for foster care and foster parents.

In the Palm Beach County region alone, there are currently 1,841 children who have been removed from unfit homes and placed into foster care.

With such a staggering need for foster care, it is no surprise that the Junior League of the Palm Beaches recently committed to focusing our impact projects on children and young adults in the foster care system. The organization saw a desperate need and made a swift decision to take action toward making a difference in these children's lives.

Morgan Richardson, Executive Vice President of the League, also saw that same need and took action in her own way by becoming a foster parent where she truly is living the JLPB mission.

BECOMING A FOSTER PARENT

For Morgan and her husband, C.W., beginning their family meant exploring their options for adoption. As they began the process for adoption, the idea of becoming a foster parent began popping up all around them.

From conversations at church about the desperate need

for foster parents to visiting friends who had recently become foster parents, it seemed that fate was pushing them in that direction.

After finally succumbing to their growing curiosity about this newly presented option, the two attended an orientation and training with Place of Hope in Palm Beach Gardens. Despite what Morgan described as a scary and eye opening introduction to foster care, a year later she and her husband decided to trust the path God seemed to be leading them on and become foster parents.

Less than one month later, they were taking care of an 11-month-old baby. In the last two years, Morgan and C.W. have provided a safe and caring home to five children all under the age of five.

In what Morgan has described as the "most amazing experience," she and her husband have found a way to provide a greatly needed service in Palm Beach County, while at the same time expanding their loving family.

PROVIDING A SAFE HOME

Most of the children in the program were taken out of broken homes where they were the innocent victims of domestic violence, homelessness, drugs, malnutrition, poor living environments, and abuse and neglect.

Without foster parents like the Richardson's, the children would be taken to a local shelter for a short period of time awaiting placement sometimes having to be sent out of the county to various locations. Once they leave the county, they

also lose their opportunity to have visits with their family.

Foster parents serve as a warm and safe place for these children to find the love and care they deserve until they are reunited with their family or find a permanent home.

Despite the difficulties they sometimes face in dealing with the paternal families or the struggles of saying goodbye to one of the children, Morgan described the best part about being a foster parent as having the opportunity to watch them grow knowing that they will have a better life.

“If we didn’t take them in, what kind of life would they have now? Hopefully, the little bit of time we spent with these precious children shaped their future.”



Morgan and CW with their foster children, whose faces covered out of respect for their privacy.



APRIL 23, 2016

The South Florida Science Center and Aquarium

Kids in the Kitchen is an annual event planned and run by the League's New Member Class. This year's event was a perfect recipe for fun and education!

More than 250 families attended this nutritious eating and exercise fair, which included interactive activities and information on healthy food preparation, good nutrition and the importance of exercise. Participants participated in the actual preparation of healthy dishes and learned about different types of activities to stay fit. -- Kristen Kumar

Photos by: Kristie Wells





Developing the Potential of Women



JUNIOR LEAGUE OF THE PALM BEACHES STRATEGIC PLAN

2016-2018

By: Dr. Noemi Coltea

2014-2016 Board Member &

2017 President-Elect

BACKGROUND

The Junior League, one of the oldest, largest and most effective women's volunteer organizations in the world, has matured and evolved since it was founded by social activism pioneer Mary Harriman in 1901. The mandate, however, has remained unwavering: to develop exceptionally qualified civic leaders who collaborate with community partners to identify a community's most urgent and pressing needs, and to address them with meaningful and relevant programs and initiatives that not only improve lives, but also change the way people think. Today, well over a century later, the Junior League consists of about 150,000 members in 291 Junior Leagues in four countries.

The seeds of the Junior League of the Palm Beaches (JLPB) were planted in early 1941 when 15 community-minded women established what was then called The Junior Welfare League. Today, the Junior League of the Palm Beaches is a nonprofit organization of over 750 trained women volunteers dedicated to promoting voluntarism, developing the potential of women and improving our community.

The culmination of 75 years of service of our Palm Beach community was not only a time of celebration, but also a time of reflection on those values that have contributed in a significant way to our organization's success. And so, we embarked on a very intentional journey of self-discovery, the results of which materialized in the organization's most recent Strategic Plan.



THE PROCESS

In August of 2015, our Board of Directors under President Laura Russell's leadership embarked on a nine-month process that we believe will shape the future of our organization and position it for success in its future. As you can imagine, this was nothing short of a major undertaking, one that brought together various internal and external stakeholders, all of whom contributed their time, talent and treasure in service of the JLPB.

We chose Bolman and Deal's (2003) Four Action Frame Model for Reframing Organizations as our guide, as they have organized insights drawn from both research and practice into four major perspectives, or frames, from which people view their world: structural, human resources, political and symbolic. Each, is complete with a group of concepts used to synthesize quantitative and qualitative data from multiple sources, including member surveys; management team and committee reports; consultant reports; and, feedback from current members, new actives, sustainers, past presidents, board members and community leaders.

We welcomed, encouraged and were pleasantly surprised by the overwhelming participation of all of our stakeholders, participation that contributed

to a well-rounded assessment of the challenges and opportunities we face as our organization grows in size and scope. Furthermore, this process narrowed in on a set of desirable outcomes we hope will resonate with everyone in a way that will engage and inspire members to contribute our best in service of an organization we all love and care for.

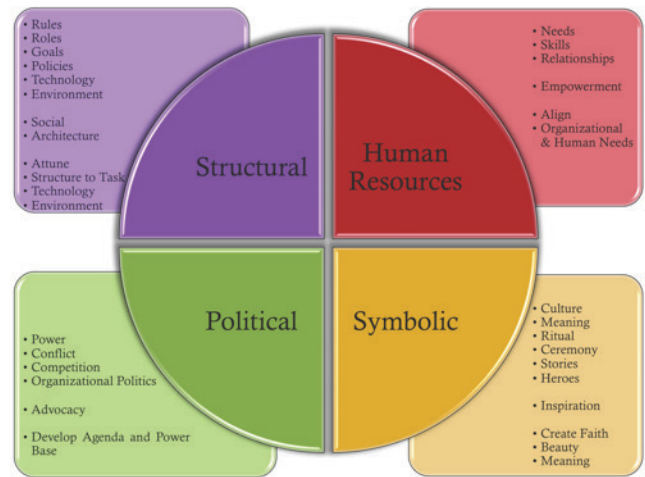
THE OUTCOME

The overarching outcome of the 2016-2018 Strategic Plan, as articulated by our mission and supported by our bylaws, is to add value to our Palm Beach Community, league members and their experiences by becoming an impact driven organization. We are proud of our rich 75-year history and the capacity of our organization to significantly and positively affect the quality of life for citizens living in Palm Beach County. We are committed to sustaining the values that are unique to us and to anchoring the organization in its next 75 years by continuing to share, inform and promote JLPB's core values in ways that are most relevant to our members and the community.

Furthermore, Bolman and Deal's (2003) Framework helped us organize subsequent priorities, each unique to the Four Frames that helped guide our conversations. Let us focus on several emerging trends related to each frame:

BOLMAN & DEAL (2003) FOUR ACTION FRAMEWORK

The Structural Frame focuses on the architecture of the organization. This includes goals, structure (think organizational chart), technology, roles and relationships, as well as the coordination of them. The overarching theme of this frame analysis is to invest in long-term capital improvements that will allow the management team to gather, report and disseminate impact driven programming at all levels. Under the structural frame, we identified a focus on creating a happier, more empowered and thriving leadership and management team, with a commitment to streamlining processes that will ensure the organizational efficacy and efficiency of all our community programs and opportunities to serve.



The Human Resources Frame emphasizes understanding people and their relationships. Individuals have needs, feelings, fears, prejudices, skills and a need to develop those skills both personally and professionally. This lens enables one to focus on what we love most, on our members and how we all fit in the development of our organization.

We are committed to creating a placement process that best understands and responds to the development of a healthy, happy and thriving membership. We also believe that it is perhaps time to articulate a clear set of values, attitudes and behaviors that reflect a JLPB member, and commit ourselves to training the next generation of volunteers with the values that have contributed to our success so far.

The Political Frame sees organizations as jungles, arenas or contests. This frame emphasizes power, competition and winning scarce resources. There are over 5,500 registered charities in Palm Beach County alone, each guided by diverse values, beliefs and interests, all of which compete for the allocation of our time and resources. Although the JLPB is, and will continue to remain, a non-partisan organization, we do recognize the influence our membership plays in multiple arenas locally, statewide and national platforms.

cont. on pg. 20 ▶

The move toward impact driven measurements will play a great role here, as our internal and external scorecard will be tracked at all levels, and celebrated with our internal and external stakeholders. Our “political” voice will be supported by data and results, as we continue to develop the potential of women and remain in the service of our community.

The Symbolic Frame is perhaps the most personal frame as it captures organizational life and focuses on meaning and faith. This frame is the root of the reason why we have joined the Junior League in the first place. For some of us, the reason was to serve the community, for others to get to know quality women who happen to share a love of volunteerism in the community, and for others it is to extend their leadership skills to new levels in an environment where women lift each other up and inspire each other to be the best version for themselves.

This context, engages both the heart and head of our members and it focuses on ritual, ceremony, story, play and culture. The focus of this frame challenges leaders to create and maintain faith, beauty and meaning. This is why our Board of Directors will continue in their

commitment to keep the JLPB as a designated hub for women who live, work and play in Palm Beach County. Furthermore, we are intentional about maintaining the uniqueness of our services, programs and partnerships in the community and aligning our fundraising efforts and relationships with partners who support our mission, our brand and our strategic plan.

FINAL THOUGHTS

As we move toward the implementation phase of our Strategic Plan, under our now 2016-2017 President Beth Steven’s leadership, we would like to thank everyone who helped spearhead this effort, especially to our outgoing and incoming Board and management teams. This process of self-discovery was a great reminder of the incredible legacy a group of kind, resourceful and civic-minded women can and will have on our community. As we now turn to implement our vision for the future, we are energized by the support and collaboration of all our teams. The best days of the JLPB are yet to come, and so, we thank each and every one of you for all your contributions that helped get us to where we are today!



Meaghan Flenner, Licensed Psychotherapist, Lic# MH12873 Psychotherapy for Women, Adolescents and Families

The good news is that with therapy, there is hope and an opportunity to learn and incorporate healthy coping skills. Together, we will identify and work through the challenges that are standing in your way from feeling and becoming your best self.

- Addiction / Substance Abuse / Behavioral Addictions
- Anxiety / Depression / Mood Disorders
- Abandonment / Attachment / Dysfunctional Family System of Origin
- Bereavement / Grief & Loss
- CAP- Certified Addiction Professional
- Career Challenges / Communication Skills / Public Speaking
- Disordered Eating Patterns / Body Image / Eating Disorders
- EMDR Trained in Trauma Resolution
- Prepare & Enrich Marriage Certified / Couples Communication Certified
- Relationship / Codependency / Divorce Care/ Mediation
- Self Esteem
- Stress Management
- Seniors / Older Adult Life Transitions

Call today for a
brighter tomorrow

MegCanHelp.com

MeaghanFlenner@
Gmail.com
561-371-8551



Two locations: Palm Beach Gardens and West Palm Beach

Our Supporters



Available for all your floral needs:

Weddings • Corporate Events • Office Flowers
Weekly / Monthly Delivery • Orchids
Yachts • Residential • Special Events

Contact Angela Wood • 561.568.0528
www.orangeblossomsflorals.com

JLPB member since 2010.



OFFICIAL MAGAZINE SPONSOR

PALM BEACH
ILLUSTRATED

SUPPORT US
BY ADVERTISING IN
UNDERCURRENTS

CONTACT US:
FOR CURRENT RATES
EMAIL UNDERCURRENTS
@JLPB.ORG OR CALL
(561) 689-7590

MEMBERS:
ASK ABOUT OUR
SPECIAL MEMBER RATE

WWW.JLPB.ORG



We specialize in custom landscape design and installation.....Call us today for a consultation. 561-304-1636
www.landscapesofdistinction.com

75TH ANNIVERSARY

Gala

75TH ANNIVERSARY GALA - EAU PALM BEACH RESORT & SPA MARCH 12, 2016

The celebration began with a cocktail hour and silent auction followed by dinner and dancing to a live band.

The event was co-chaired by Camille Murphy-Kubicek and Angela Vecellio, with Julie Rudolph as auction chair and Clare O'Keeffe and Kathryn Vecellio as honorary chairs.





Celebrating 75 Years

THANK YOU TO OUR GENEROUS SPONSORS

GOLDEN JUBILEE DIAMOND SPONSORS

Clare O'Keeffe
Kathryn Vecellio

HOPE DIAMOND SPONSOR

Cheney 
Brothers

MEDIA SPONSOR

**PALM BEACH
ILLUSTRATED**

MILLENNIUM STAR DIAMOND SPONSORS

TIFFANY & Co.



RUDOLPH & ASSOCIATES LLC
BOARD CERTIFIED IN MARITAL AND FAMILY LAW

100P
Pioneer Linens
Since 1912

TIFFANY DIAMOND SPONSORS

S&H



**EQUITY
TRUST**



PNC BANK

*Palm Beach
Medical*





Celebrating 75 Years





Our Members

Committee of The Year:

EXTREME MAKEOVER 75TH ANNIVERSARY PROJECT

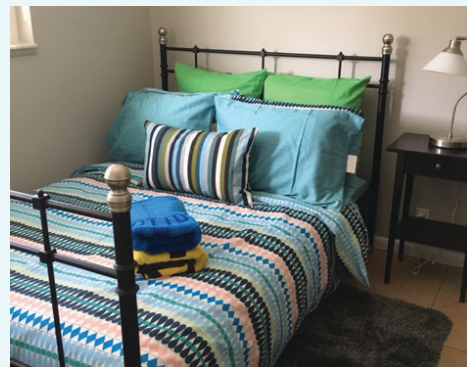
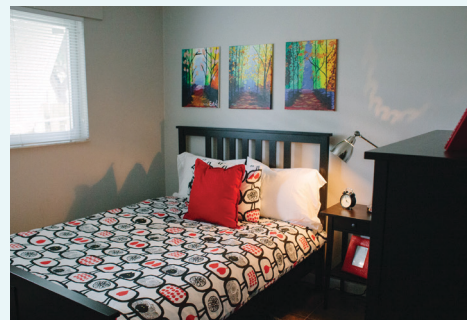
PROJECT UPDATE | MAY 2016

Phase 2 of the Vita Nova Extreme Makeover is complete! A total of 8 living units have been painted, patched, repaired, cleaned and fully furnished with brand new IKEA furniture and accessories. Active member, Catherine Anido, donated a brand new BBQ grill and propane tank from Lowes. The Vita Nova Residents are looking forward to hosting their very first BBQ this summer.

UPCOMING RENOVATIONS | SUMMER 2016

Phase 3 will begin renovations this summer. These four apartments are three-bedroom units, which are home to 12 residents. The units will be painted and the 2016-2017 committee will be chipping in to clean and furnish the units thereafter. We would like to thank ECM (East Coast Mechanical), Jordan Giving Hope and Ellis Parker for sponsoring these units and making this dream a reality.

COMPLETED RENOVATIONS





Our Members

MEMBER NEWS

HAPPILY EVER AFTERS & BUNDLES OF JOY



DANA ROSS WELCOMED A BABY GIRL, LOLA JEAN ROSS, MAY 6, 2016



ASHLEY COSTA WELCOMED A BABY GIRL, AVA CATHERINE COSTA FEBRUARY 9, 2016



ELIZABETH PALACE WELCOMED A BABY BOY, JOHN HENRY PALACE, DEC. 31, 2015

just married



ALEXANDRA & ALEXANDER MATA
November 21st, 2015
Saint Ann Catholic Church & Breaker's West



ELIZABETH & JOHN MICHAEL PALACE
NOVEMBER 19, 2015

No longer with us

Lolly Russell, Sustaining emeritus member

JLPB member since 1953, Russell died peacefully at her home in Atlantis on January 29, 2016.

Karyl Sonja “Honsey” Ryskamp Sustaining member

Karyl was a resident of Jupiter. She passed away May 11, 2016

Priscilla Gulliford Searcy, Sustaining member

Priscilla was a resident of North Palm Beach and long time member of the JLPB, serving as Chairman of The Festival of the Trees.

Membership VP Report

By: Lauren King, membershipvp@jlpb.org

Transfer In:

Roxanne (Ann) Adrian – Sustainer – Buffalo, NY
Morgan Baker – Active – Ft. Lauderdale, FL
Sharon Bauer – Sustainer – Chicago, IL
Betsy Beyer – Sustainer – Montclair/Newark, NJ
Jane Causey – Sustainer – Greensboro, NC
Robin Dunlap – Active – Tallahassee, FL
Lisa Catherine Esquivel – Active – San Francisco, CA
Mary Hayes-Kaminsky – Sustainer – Savannah, GA
Florence Holden – Sustainer
Macy Leshner – Active – Martin County, FL
Vicki Lopez – Sustainer – Tallahassee, FL
Lynn Morris – Active – Richmond, VA
Lauren Neely – Active – Columbia, SC
Elizabeth Palace – Active – Los Angeles, CA
Farley Rentschler – Active – Boca Raton, FL
Michele Schimmel – Sustainer - Northern Westchester, NY
Rory Shean – Sustainer - Lexington, KY
Reina Sinni – Sustainer – New York, NY
Nicole Sydney – Active – Orlando, FL

Transfer Out:

Barbara Burke – Sustainer - Columbia, SC
Ashley Costa – Active – Mobile, AL
Hollie Elhilow – Sustainer – Tallahassee, FL
Erin Frazee – New Active - Cleveland, OH

Lauren Kohley – Active – Grand Rapids, MI

Rophe Mason – Active – Boston, MA

Analisa Muti – Active – Charleston, SC

Sandra Sloan – Active – Atlanta, GA

Reinstate:

Jennifer Ribek

Member Count

| | |
|-----|--|
| 201 | Actives |
| 12 | Actives on Leave |
| 29 | Active Golds |
| 18 | Active Transfers In |
| 80 | New Members |
| 277 | Sustainer |
| 4 | Non-Resident Sustainers |
| 17 | Sustainer Inter-League |
| 5 | Sustainer Inter League Palm Beach Home |
| 11 | Sustainer Transfers In |
| 69 | Sustainer Emeritus |
| 3 | Emeritus Inter-League |
| 2 | Emeritus Inter League Palm Beach Home |
| 2 | Emeritus Non Resident |

TOTAL MEMBERS – 730

** Sustainers become emeritus when they turn 80 years old.*



**Joan Jones and
Betsy Vaughan**
JLPB Sustainer Chairs
Joan: jmj2@uwm.edu
Betsy: rvbv19cros@aol.com

WHAT A YEAR IT WAS!

Reflections from your co-chairs

Dear Readers,

As we began planning the 2016-2017 Sustainer calendar, we found ourselves looking back over the wide array of activities and events available for our selection in 2015-2016. Happily, many of the organizers of this past year's events have agreed to continue in their current roles.

Irene Goodkind and Jayne Barkdull's Evening Book Club and Kelly Domnick and Janice Marshall's Lunch & Literature will invite us to expand our minds with thoughtfully selected books and lively discussions. Debra Cannava and Laura Hanslip will provide opportunities for dining at elegant Palm Beach restaurants, while Cindy Vogel, Lola Carson and Bonnie Siegfried will find new "Wine Not" locales for sipping and socializing. Our most anticipated Sustainer events, The Fall Kick-Off Brunch, at Michele Shimmel's home will be coordinated again by Darlene Hanes Duplessis, and Donna Wright will again host the Sustainer Dinner Party in February at her home.

The Holiday spirit will prevail, as we shop at Deck the Palms, enjoy the sweet and sugary fragrances at Laura Warner's home with Jan Smedley co-hosting the annual Holiday Cookie Exchange, wander through the Ann Norton Sculpture Garden's magical Festival of Trees with Laura Macleod-Volstad and open presents at the Evening Book Club's Holiday Party at Camille Goodby's home.

The success of new activities this year, including Dinner and a Show and Historical Tour of Worth Avenue and the Tea and Tour of the Flagler Museum, encouraged the scheduling of similar events for the coming year. 2016-2017 events include Roberta Chapey and Bonnie Siegfried's plans for Dinner and a Show, "Evita" at the Lake Worth Playhouse, Debra Cannava's coordination of the Love of Literacy Luncheon, and Jerri Engelbrecht's Tour of Palm Beach Antiques & Design Center. At the Croquet Event in March, Barbara Weltner will again instruct us in the game of croquet. Sabra Ingeman is planning two new chances to stretch your legs at golf outings in October and April and Donna Wright and Betsy Vaughan invite you to do the same at their monthly Walk and Talk, exploring Palm Beach county neighborhoods.

Details of these and other "possible" events are still in the planning stage. The Sustainer calendar in this issue of Undercurrents highlights these events for you to "mark your calendar – save the date". A revised and more complete 2016-2017 Sustainer calendar will be distributed at the Fall "Kick-Off" brunch and will be included in the Fall E-Blasts. Additions and changes to the calendar are posted regularly in the Sustainer E-blast.

We have had great fun scheduling and participating in all the Sustainer events and we appreciate all of your creative suggestions for new events and your willingness to organize them. We are grateful to Margaret Schuemann, our indefatigable Sustainer E-blast editor, who with consummate serenity manages countless last minute date and location changes, assuring we don't lose our way or miss out on a "fun" event.

A happy summer to all!

Sincerely,

Joanie and Betsy



1. The 1980's Past Presidents, Lynn Butler, Bonnie Weaver, Carol Milling, Leni Bane, and Ann Talley at January GMM

2. Dine-Around after Gretchen Scott at Casa Mia with Ann Adrian, Joan Jones, Meaghan Flenner, Betsy Vaughan, Roberta Chapey and Margaret Schuemann

3. An entourage of Sustainer Supporters for the 1980's Past Presidents at January GMM

4. Gretchen Scott Shop and Sip Night for Vita Nova with Roberta Chapey, Lola Carson, Betsy Vaughan, Ann Adrian, Meaghan Flenner, Joan Jones and Margaret Schuemann

5. Wine NOT? With Camille Goodby, Sabra Ingeman, Cindy Vogel and Lola Carson

6. Spring Golf Outing with Donna Wright, Camille Goodby, Roberta Chapey, Sabra Ingeman, Cindy Vogel, Betsy Vaughan, and Jennifer.

7. Dinner and A Show, "High Society" Joan Jones, Roberta Chapey, Bonnie Siegfried, Betsy Vaughan, Jan Stearns, Donna Wright...and many others not pictured

8. Fun at the evening book club

9. [clockwise from top left] Merrie Martinson, Bonnie Siegfried, Laura Burke and Sustainer from NYC at the 75th Gala Celebration

10. Joan Jones at the "Girls Night In" at Nelle Smith



SUSTAINERS 2016-2017 CALENDAR

*Future twice monthly Sustainer E-blasts will have all the details for these events and activities.
For now, mark your calendars and save the dates!*

OCTOBER

- 12 Dine-Around – Café L'Europe, Debra Cannava
- 25 Fall Golf Outing – Sabra Ingeman

NOVEMBER

- 12 Annual Sustainer Fall Kick-Off Brunch – Darlene Hanes/Duplessis/Ann Talley/Liz Shapiro
Home of Michele Schimmel, Frenchmen's Reserve
- 17 Happy Hour – Wine Not? – Cindy Vogel/Lola Carson/Bonnie Siegfried
- 19 Deck the Palms, Palm Beach Convention Center

DECEMBER

- 3 or 10 Lunch and Holiday Decorating – Nelle Smith House
- 13 Evening Book Club Holiday Party – Irene Goodkind/Jayne Barkdull | Home of Camille Goodby
- 14 Festival of Trees at Ann Norton Sculpture Gardens – Laura Macleod-Volstad
- 15 Lunch & Lit Holiday Book Exchange – Kelly Domnick/Janice Marshall
- 17 Holiday Cookie Exchange – Jan Smedley at the Home of Laura Warner

JANUARY 2017

- 19 Happy Hour – Wine Not? – Cindy Vogel/Lola Carson/Bonnie Siegfried
- 30 "Ladies Who Lunch" – Laura Hanslip

FEBRUARY

- 2 Dinner and a Show, 'Evita' – Lake Worth Playhouse – Roberta Chapey/Bonnie Siegfried
- 11 Sustainer "Notte Italiano" Dinner Party – Home of Donna Wright | Bonnie Siegfried/Jan Smedley/Jan Stearns
- 16 Lunch @ Ann Norton Sculpture Gardens – Debra Cannava
- TBA Gretchen Scott Designs Sip and Shop Fund Raiser & Dine-Around

MARCH

- 1 Tour of Palm Beach Antiques & Design Center & Lunch @ Belle & Maxwell – Jerri Engelbrecht
- TBA Love of Literacy Luncheon – Literacy Coalition, Debra Cannava
- 9 Croquet Event, PGA National – Barbara Weltner
- 16 Happy Hour – Wine Not? – Cindy Vogel/Lola Carson/Bonnie Siegfried

APRIL

- 20 Happy Hour – Wine Not? – Cindy Vogel/Lola Carson/Bonnie Siegfried
- 25 Spring Golf Outing – Sabra Ingeman

MAY

- TBA JLPB May Dinner

BRIDGE – Beginners’ Bridge Tables are Here!

Bridge activities will be continuing at various levels. Carol Micken is leading the Off-Season Bridge for experienced and beginners that will be held at various locations due to the number of players. Watch your E-Blast.

Betsy Vaughan will continue as leader of the Bridge & Lunch from December thru April. Jan Stearns, her faithful co-leader, is stepping down after 9 years of organizing, collecting monies and keeping the group on task. Thank you, Jan, for your faithful service.

Please join us at 10:00 am on the first Thursday of each month from December thru April. New members are welcome to join us, feel free to bring a guest and enjoy a morning of bridge and lunch. Please send your check in the amount of \$30.00 per monthly bridge/lunch to Betsy Vaughan, 105 Paradise Harbour Blvd. 506, North Palm Beach, Florida, 33408.

Questions: Betsy Vaughan, rvbv19cros@aol.com or 561-841-7815.

Our Beginner Tables are up and running, contact Cindy Vogel if you have any questions, cindyvogel67@yahoo.com or 804-347-8826.

SCHEDULE OF BRIDGE & LUNCH:

December 1 – Lost Tree Club, Edna Strnad

January 5 – Beach Club, Reina Sinni

February 2 – Beach Club, BoBo McKenney

March 2 – Beach Club, Laura Warner

April 6 – PGA National, Patty Steerup

FALL LUNCH & LIT DAYTIME BOOK CLUB SELECTIONS MEETS 4TH THURSDAY, NOON

September 22 – The Girl in the Red Coat by Kate Hamer

October 27 – Leaving Time by Jodi Picoult

November 17 – The Midnight Watch by David Dyer

December 15 – Holiday Book Exchange

The Lunch & Lit Book Club meets monthly (usually the 4th Thursday of the month) 12 noon at restaurants that reflect the ethnicity of the characters or the setting of the book being discussed.

Watch the E-blast for locations for meetings.

Kelly Domnick and Janice Marshall are the Lunch & Lit Co-chairs.

Evening Book Club

June 14 – Light In Ruins by Chris Bohjalian

July 12 – Take Me With You: Secret Search for Family in a Forbidden Cuba by Carlos Frias

August 9 – Career of Evil by Robert Galbraith

September 13 – In the Dark, Dark Wood by Ruth Ware

October 11 – Citizens of London: The Americans who Stood with Britain in its darkest, Finest Hour by Lynne Olson

November 15 – Circling The Sun by Paula McLain

December 13 – In Other Words by Jhumpa Lahiri

Watch the E-blast for locations for meetings.

Irene Goodkind and Jayne Barkdull are the Evening Book Club Co-chairs.

Walk and Talk...

Exploring Palm Beach County on foot

Please join us at 9:30am to 1 am on the first Monday of each month from November through May. We will meet at the North Palm Beach Community Center, 1200 Prosperity Farms Road, North Palm Beach.

We will carpool to an ‘interesting place’ and walk and talk for an hour – exercise and fellowship.

No reservations necessary. Questions: Donna Wright 561-346-7641 or Betsy Vaughan 561-841-7815.

Address and postage area

LEADERSHIP MAKING AN
DEVELOPMENT I M P A C T
AN ORGANIZATION OF WOMEN
IMPROVING THE VOLUNTEER
COMMUNITY
JUNIOR LEAGUE 1941 SINCE
OF THE PALM BEACHES